



**THE**  
**CONFINED**  
**SPACE**  
**CATALOGUE**

UK LEGISLATION

CONSULTANCY  
AND RESCUE TEAMS

TRAINING

ISOLATION

GAS DETECTION

BREATHING AIR

VERTICAL ENTRY

LIGHTING/HELMETS/RADIOS

EMERGENCY RESCUE  
MEDICAL EQUIPMENT

CONFINED SPACE COVERS  
AND BARRIERS/SIGNAGE



**+44(0)1422 310456**  
confinedspace@reecesafety.co.uk  
www.reecesafety.co.uk



## Contents

### UK LEGISLATION

4

Current UK legislation regarding working in a confined space

### BREATHING AIR

29-32

Self-contained breathing apparatus, emergency escape breathing apparatus and cylinders

### CONSULTANCY AND RESCUE TEAMS

5-6

Safety support, rescue teams and consultancy services

### VERTICAL ENTRY

33-38

Tripods, blocks, winches, harnesses, brackets, lanyards and accessories

### TRAINING

7-16

Low, medium and high risk confined space entry training, overseer/topman confined space entry training, confined space emergency rescue, confined space training - awareness for managers and using breathing apparatus courses.

### LIGHTING/HELMETS/RADIOS

39-43

ATEX lighting, JSP, Ridgear and Petzl helmets and ATEX radios

### ISOLATION

17-18

UK legislation and the nine steps to safe electrical isolation

### EMERGENCY RESCUE MEDICAL EQUIPMENT

44-46

Stretchers, accessories, trauma kits and defibrillators

### GAS DETECTION

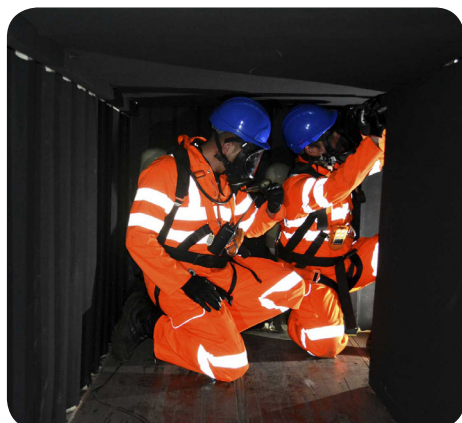
19-28

Single gas detectors, four gas detectors, five gas detectors and area monitors

### CONFINED SPACE COVERS AND BARRIERS/SIGNAGE

47-49

Confined space covers, tags, barrier tape, barriers and signage.



# Dear Customer

## Welcome to the CONFINED SPACE

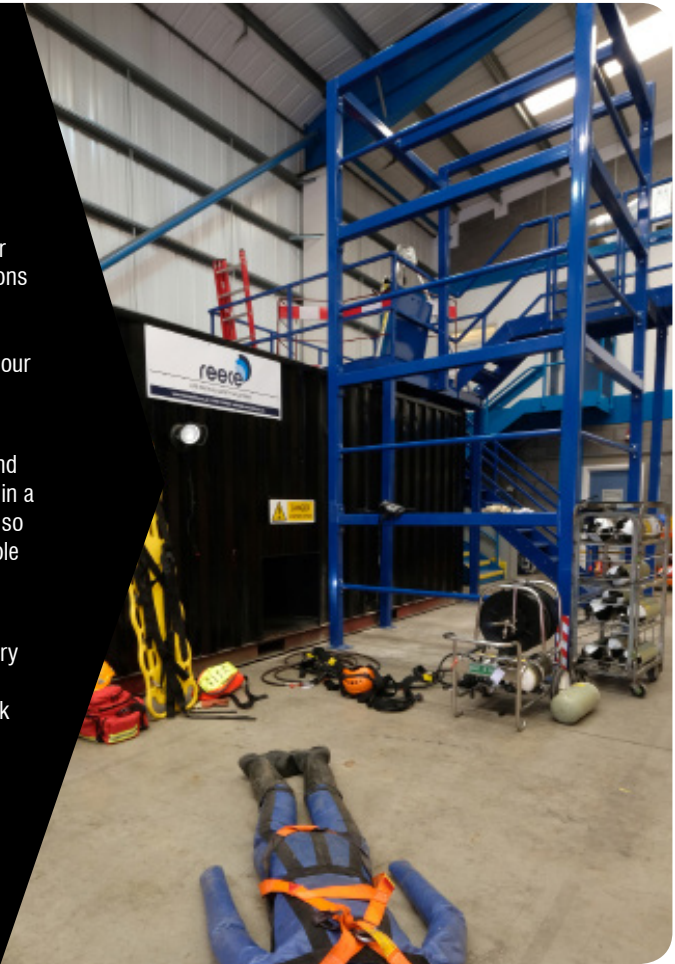
### CATALOGUE ...

Reece Safety are proud to be associated with the growing awareness for safe systems of work. Supplying the best energy source isolation solutions available across all industrial sectors including oil & gas, chemical, power generation, waste, food and aggregates and minerals. Our strong partnerships have served us well over the years and we have expanded our product range accordingly.

We have recently been asked for products and services associated with confined space, this has taken us into providing the specialist training and products to allow safe working and legal compliance. We have invested in a dedicated, fully accredited confined space training simulator and have also expanded our team to deliver the training packages to the highest possible standard.

This catalogue is our first publication to describe our range of specialist confined space training and all products we recommend are used to carry out these activities. We hope you find this catalogue of value, We are continuously developing ways to further support our customers and look forward to working with you in this sector.

Andy Graham  
M.D. Reece Safety



### Version 3



Unit B9, Lowfields Close, Lowfields Business Park, Elland,  
West Yorkshire HX5 9DX

T +44 (0)1422 310456 F +44 (0)1422 311070

email [confinedspace@reecesafety.co.uk](mailto:confinedspace@reecesafety.co.uk)

[www.reecesafety.co.uk](http://www.reecesafety.co.uk)



Reece Safety  
have a City and  
Guilds accredited  
training centre.



# UK Legislation

## Confined Space Regulations 1997

As per the Health and Safety Executive;

*“Under domestic law (the Health and Safety at Work etc Act 1974) employers are responsible for ensuring the safety of their employees and others. This responsibility is reinforced by regulations.*

*The Confined Spaces Regulations 1997 apply where the assessment identifies risks of serious injury from work in confined spaces.*

*These regulations contain the following key duties: Avoid entry to confined spaces, e.g. by doing the work from the outside  
If entry to a confined space is unavoidable, follow a safe system of work and;  
Put in place adequate emergency arrangements before the work starts”*

To work in Confined Spaces safely the HSE have published the Approved Code of Practice (ACOP 2014) and guidance which this catalogue will refer to throughout.

## Other regulations that need to be taken into account when working in confined space

- The Health and Safety at Work etc Act 1974
- The Management of Health and Safety at Work Regulations 1999
- The Personal Protective Equipment at Work Regulations 2002
- Respiratory Protective Equipment at Work Guidance HSG53
- The Control of Substances Hazardous to Health Regulations 2002
- The Provision and Use of Work Equipment Regulations 1998 (PUWER)
- Electricity at Work Regulations 1989
- Workplace (Health, Safety and Welfare) Regulations 1992
- Control of Noise at Work Regulations 2005
- Control of Lead at Work Regulations 2002
- Control of Asbestos Regulations 2012
- Work at Height Regulations 2005
- The Dangerous Substances and Explosive Atmospheres Regulations 2002 (DSEAR)

Source: Health and Safety Executive Legislation  
<http://www.hse.gov.uk/confinedspace/legislation.htm>

## What is a confined space?

It can be any space of an enclosed nature where there is a risk of death or serious injury from hazardous substances or dangerous conditions (eg lack of oxygen).

Some confined spaces are fairly easy to identify, e.g. enclosures with limited openings:

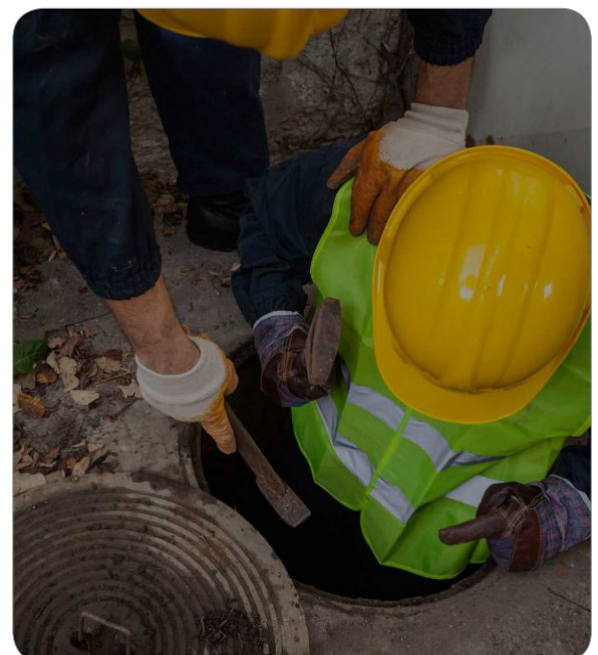
- Storage tanks
- Silos
- Reaction vessels
- Enclosed drains
- Sewers

Others may be less obvious, but can be equally dangerous, for example:

- Open-topped chambers
- Vats
- Combustion chambers in furnaces etc
- Ductwork
- Unventilated or poorly ventilated rooms

It is not possible to provide a comprehensive list of confined spaces.

Some places may become confined spaces when work is carried out, or during their construction, fabrication or subsequent modification.



# Consultancy and Rescue Teams

Reece have a partnership with a specialist company that offer a consultancy and rescue team service. This section will explain what these services entail and how they can help a variety of companies, with in-house teams or working with contractors.

As per ACOP 2014;

*“The arrangements for emergency rescue, required under regulation 5 of the Confined Spaces Regulations, must be suitable and sufficient. If necessary, equipment to enable resuscitation procedures to be carried out should be provided. The arrangements should be in place before any person enters or works in a confined space.”*

Our knowledgeable consultants can provide you with guidance and advice regarding all aspects of confined spaces and confined space work. They will provide advice on topics such as; compliance with regulations, understanding of approved codes of practice, safe working methods, training, gap analysis, maintaining competency, communications, company policy, pre-entry and entry arrangements, rescue requirements, equipment selection, use, inspection, calibration and service.



## SERVICES NEEDED?

Call our  
sales team -  
**+44(0)1422 310456**



Source The Confined Space Regulations 1997 - Approved Code of Practice and guidance - Health and Safety Executive, third edition (2014)

# Consultancy

The benefits of using our consultants include; protecting business reputation, increased efficiency and productivity, ensuring workforce safety, legislative compliance and independent, objective and knowledgeable advice and information.

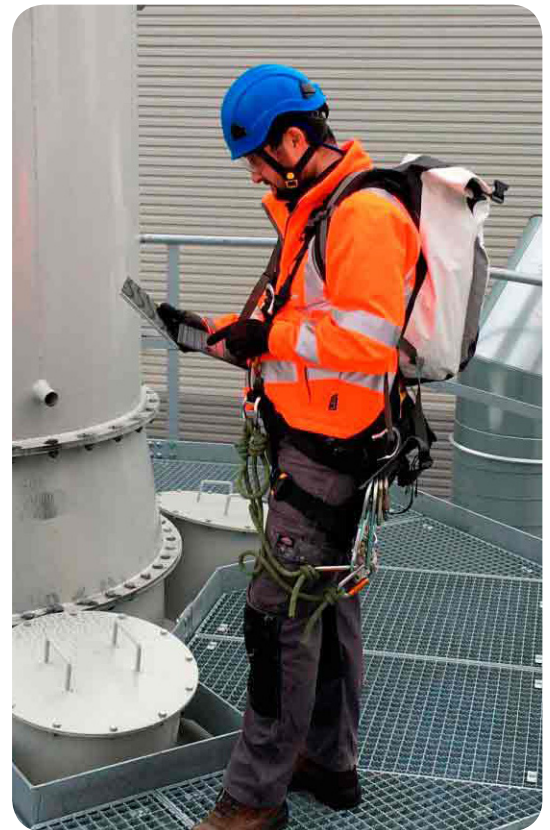
Whether it is for routine operation and maintenance or a one-off project, our consultants will produce all the risk management documentation you require.

We can produce your company's confined spaces policy and procedures. Our consultants will then assist you in implementing them at your workplace. A good confined space health and safety policy is imperative to embed a safe working environment and culture.

Whatever your work activity, our consultants can deliver comprehensive inductions, toolbox talks and safety briefings to your employees, contractors and/or site visitors. We will compile details of the brief, a record of who attended and produce files for your records.

Our consultants can complete a comprehensive audit on your behalf to ensure a safe working environment and compliance with regulations.

Upon completion of the audit you will be provided with a detailed report that will include any recommendations that may improve the overall safety of your team or contractors working on your behalf.

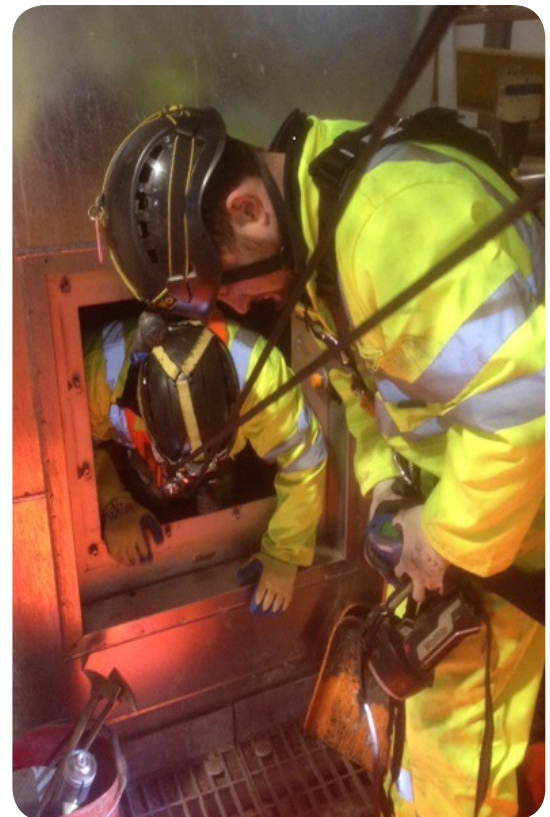


# Safety Support and Rescue Teams

A typical rescue team will consist of three team members. One team member will supervise, with the remaining two team members on standby ready to effect rescue should the need arise. However in some circumstances, a larger rescue team may be required.

We can;

- Provide either confined space rescue teams, rope rescue teams or a combination of the two using multi-skilled team members' dependent on your individual requirements
- Provide risk assessment, method statement, first aid risk assessment, safe system of work and rescue plans
- Inspect the work space immediately prior to any work commencing to establish that the risk assessment, method statement, safe system of work and rescue plan are valid and sufficient
- Provide all relevant personnel with a task specific safety briefing
- Check all equipment is suitable and in safe working order
- Provide fall restraint and rope retrieval systems if required
- Monitor and supervise all personnel entering and exiting the work space
- Monitor the atmosphere of the confined space and advise if additional precautions should be taken or if the work should be re-evaluated
- Should the rescue team be required to perform a rescue, the rescue plan will be executed, and a safe rescue will be performed



*"You must make suitable arrangements for emergency rescue which will depend on the nature of confined space, the risks identified and the likely nature of an emergency rescue. You should not rely on the public emergency services. You should consider accidents arising from a specified risk, and any other accident in which a person needs to be recovered from a confined space, for example incapacitation following a fall."*

Source The Confined Space Regulations 1997 - Approved Code of Practice and guidance - Health and Safety Executive

# Training Courses

As per ACOP 2014-

*“Workers must have adequate training and experience in the particular work involved to be competent to work safely in a confined space.*

*Training standards must be appropriate to the task, and to the individual’s roles and responsibilities, so that work can be carried out safely.”*

*“Specific training for work in confined spaces will depend on an individual’s previous experience and the type of work they will be doing. This training will need to cover;*

- (a) *an awareness of the Confined Space Regulations and in particular the need to avoid entry to a confined space, unless it is not reasonably practicable to do so, in accordance with regulation 4 (1);*
- (b) *an understanding of the work to be undertaken, the hazards, and the necessary precautions;*
- (c) *an understanding of safe systems of work, with particular reference to ‘permits-to-work’ where appropriate;*
- (d) *how emergencies arise, the need to follow prepared emergency arrangements, and the dangers of not doing so.”*

Our confined space courses can be held at our City and Guilds accredited centre and on completion your team will receive a C&G certificate.



**We can come to you**  
**On site training available**  
**Call us to discuss your requirements**



Course Title	Days	Page
<b>Low Risk Confined Space Entry Training</b>	<b>1</b>	<b>8</b>
<b>Medium Risk Confined Space Entry Training</b>	<b>2</b>	<b>9</b>
<b>High Risk Confined Space Entry Training</b>	<b>3</b>	<b>10</b>
<b>Overseer/Topman Confined Space Entry Training</b>	<b>2-4</b> <i>Depending on experience</i>	<b>11</b>
<b>Confined Space Emergency Rescue Training</b>	<b>3</b>	<b>12</b>
<b>Confined Space Training - Awareness for Managers</b>	<b>3</b>	<b>13</b>
<b>Level 3 First Aid</b>	<b>3</b>	<b>14</b>

# Low Risk Confined Space Entry Training



## DESCRIPTION

This confined space training course is about entering and working in a low risk environment with adequate natural or mechanical ventilation. The access appears simple and unobstructed and there is no likely risk of flooding. If the operative is only checking areas no deeper than 1200mm, with easy access openings using a gas detector, where standing up in an alarm situation would render them safe, they will need to take the low risk confined space entry course. This only allows for working in NC1 confined spaces.

NC1 low risk confined spaces are defined as; shallow entry with adequate natural or mechanical ventilation, where access is simple and unobstructed and there is no likely risk of flooding. Good examples of this are; meter pits, valve chambers, stairwells, booster pumping stations and PRV chambers.

## DURATION

1 day

## TYPE OF CERTIFICATE

Reece Accreditation including a certificate on completion  
City and Guilds (City and Guilds registration incurs a £38pp charge)

## MIN/MAX PERSONS ON COURSE

4/8

## SYLLABUS

- The range of subjects covered on this course are;
- Definition of a confined space, Water UK NC1-NC4 classifications and low, medium, high definitions
  - Specified foreseeable risks
  - Duties under the regulations, including preventing the need for entry
  - Risk assessment and hazard identification
  - Atmospheric hazards and gases
  - Principles and use of gas detectors
  - Safe systems of work and permits to work
  - Roles, responsibilities and topman/overseer entrant duties
  - Pre-use checks, correct donning and adjustment of harness
  - Inspection and applications of tripods, winches and fall arrest equipment;
  - Practical exercises and assessments

## LEARNING OUTCOMES

- Prepare to work safely in low risk confined spaces
- Enter and exit low risk confined spaces safely
- Use equipment and tools safely and in accordance with manufacturers' instructions
- Follow procedures and work safely
- Deal with emergencies
- Use appropriate behaviour when working in low risk confined spaces
- Use general knowledge for working in low risk confined spaces
- Apply appropriate industry specific knowledge for working in low risk confined spaces

## COURSE DETAIL

- Reasonable level of fitness required
- Must speak fluent English
- Please wear steel toe capped work shoes and standard workwear
- Lunch, tea and coffee will be provided
- Full course details sent out in advance
- Please arrive 15 mins prior to course start

**CALL US  
and quote  
RCST-LOW  
FOR MORE INFO**



According to the ACOP 2014;

*"Where it is not reasonably practicable to avoid entering a confined space to undertake work, the dutyholder is responsible for ensuring that a safe system of work is used. In designing a safe system of work, they should give priority to eliminating the source of any danger before deciding what precautions are needed for entry."*



# Medium Risk Confined Space Entry Training



## DESCRIPTION

If the operative is required to enter any tank, chamber, or room that has a restricted air flow, but would expect the atmosphere to at least start off as safe, then they would require the medium risk confined space entry course. This course will teach candidates how to use the gas monitor, escape set, tripod, winch, harness and other associated confined space entry equipment. It will build a basic awareness of how to formulate a risk assessment and spot potential hazards. It allows for the operatives to disconnect from the winch as a working party but the escape time must be considered so that all entrants have sufficient time if an alarm or event occurs that all can exit safely.

This confined space training course is about working in confined space environments where there is a medium risk that a specified hazard may be present. It will involve the presence of one or more people – positioned outside the confined space – who have designated responsibilities for controlling the entry and dealing with emergencies. Completion of this confined space training course allows for entrance to NC1, NC2 and NC3 confined spaces. NC2 medium risk confined spaces are defined as; vertical direct unobstructed access with continuous attachment to a man riding hoist or similar mechanical rescue device.

NC3 medium risk confined spaces are defined as; when it is not possible to have persons permanently attached to a safety line. Usually it will be a team entry which moves away from the entry point. This situation can be, man entry sewers, aqueducts and complex wet wells. Working without an attached rescue line and includes working away from the point of entry.

## DURATION

2 days

## TYPE OF CERTIFICATE

Reece Accreditation including a certificate on completion  
City and Guilds (City and Guilds registration incurs a £38pp charge)

## MIN/MAX PERSONS ON COURSE

4/8

## SYLLABUS

The range of subjects covered on this course are;

- Definition of a confined space & Water UK NC1-NC4 classifications & low, medium, high definitions
- Specified risks
- Duties under the regulations, preventing the need for entry
- Risk assessment and hazard identification
- Atmospheric hazards and gases
- Principles and use of gas detectors
- Safe systems of work & permits to work
- Roles, responsibilities and topman/overseer entrant duties
- Pre-use checks, correct donning & adjustment of harness
- Inspection and applications of tripods, winches and fall arrest equipment
- Inspection and use of personal escape breathing apparatus
- Practical exercises and assessments

## LEARNING OUTCOMES

- Prepare to work safely in medium risk confined spaces
- Enter and exit medium risk confined spaces safely
- Prepare and use escape breathing apparatus in accordance with manufacturers' instructions
- Use equipment and tools safely and in accordance with manufacturers' instructions
- Follow procedures and work safely
- Deal with emergencies
- Use appropriate behaviour when working in medium risk confined spaces
- Understand legislation governing working in medium risk confined spaces
- Apply appropriate industry specific knowledge for working in medium risk confined spaces

## COURSE DETAIL

- Reasonable level of fitness required
- Must speak fluent English
- Please wear steel toe capped work shoes and standard workwear
- Lunch, tea and coffee will be provided
- Full course details sent out in advance
- Please arrive 15 mins prior to course start

**CALL US  
and quote  
RCST-MED  
FOR MORE INFO**



Terms and conditions apply

# High Risk Confined Space Entry Training



## DESCRIPTION

This confined space training course is about working in confined spaces which have non-standard entries and which, in consequence, makes rescue difficult.

Entry may involve complex entry procedures and there will be work-specific controls and rescue arrangements. It will entail the use of self-contained open circuit breathing apparatus, specialist detection equipment, and resuscitation equipment. It will require the presence of personnel who have designated responsibilities for dealing with emergencies. The entry classification is NC4.

This confined space training course will cover all of the NC1 and NC2 content, along with a more in depth risk assessment and the inclusion of wearing full breathing apparatus combined with basic emergency first aid. This allows entrance to all classifications (NC1, NC2, NC3 and NC4) and includes entrance wearing full breathing apparatus to carry out the task in hostile environments.

NC4 high risk confined spaces are defined as; non-standard entries involving complex operations which introduce additional risks and require specific control and rescue arrangements. These can come from mechanical hazards, physical complexity of system introduced hazards and enhanced specific intrinsic hazards. Note: All operatives must be trained in the use of full breathing apparatus.

## DURATION

3 days

## TYPE OF CERTIFICATE

Reece Accreditation including a certificate on completion  
City and Guilds (City and Guilds registration incurs a £38pp charge)

## MIN/MAX PERSONS ON COURSE

4/8

## SYLLABUS

The subjects covered on this course are;

- Definition of a confined space & Water UK NC1-NC4 classifications & low, medium, high definitions
- Specified Risks
- Duties under the regulations, preventing the need for entry
- Risk Assessment and hazard identification
- Atmospheric hazards and gases
- Principles and use of gas detectors
- Safe systems of work & permits to work
- Roles, responsibilities and top man/overseer and entrant duties
- Inspection and use of escape sets and full working breathing apparatus
- Pre use checks, correct donning & adjustment of harness
- Inspection and applications of tripods, winches and fall arrest equipment
- Practical exercises and assessments

## LEARNING OUTCOMES

- Prepare to work safely in high risk confined spaces
- Enter and exit high risk confined spaces safely
- Prepare and use self-contained open circuit breathing apparatus in accordance with manufacturers' specifications
- Use equipment and tools safely and in accordance with manufacturers' instructions
- Follow procedures and work safely
- Deal with emergencies
- Use appropriate behaviour when working in high risk confined spaces
- Use general knowledge for working in high risk confined spaces
- Apply appropriate industry specific knowledge for working in high risk confined spaces

## COURSE DETAIL

- Reasonable level of fitness required
- Must speak fluent English
- Please wear steel toe capped work shoes and standard workwear
- Lunch, tea and coffee will be provided
- Full course details sent out in advance
- Please arrive 15 mins prior to course start

**CALL US**  
and quote  
**RCST-HIGH**  
**FOR MORE INFO**



Terms and conditions apply

# Overseer/Topman Confined Space Entry Training



## DESCRIPTION

This confined space training course is designed for those who will supervise operatives entering and working in high risk confined spaces but who will not enter themselves. The course also covers dealing with emergencies in confined spaces. It involves both theoretical and practical elements and includes an assessed practical exercise.

## DURATION

2 days (if candidate has completed high risk confined space entry course) or 4 days

## TYPE OF CERTIFICATE

Reece Accreditation including a certificate on completion  
City and Guilds (City and Guilds registration incurs a £38pp charge)

## MIN/MAX PERSONS ON COURSE

4/8

## SYLLABUS

The subjects covered on this course are;

- Legislation recognition & classification
- Safe systems of work, risk assessments and permits to work
- Emergency arrangements & rescue planning
- Lockout procedures and equipment
- Confined space roles and responsibilities
- Equipment overview including; escapes sets, self-contained breathing apparatus, gas monitors, communication, tripods, davits, winches and retrieval blocks
- Assessment on the management of a practical entry

## LEARNING OUTCOMES

- Prepare to act as safety attendant for teams working in confined spaces
- Oversee safe entry & exit to confined spaces
- Monitor work team to ensure procedures are followed
- Prepare for and deal with emergencies
- Use appropriate behaviour for carrying out top man work in high risk confined spaces
- Apply relevant standards for carrying out top man work in high risk confined spaces

## COURSE DETAIL

- Reasonable level of fitness required
- Must speak fluent English
- Please wear steel toe capped work shoes and standard workwear
- Lunch, tea and coffee will be provided
- Full course details sent out in advance
- Please arrive 15 mins prior to course start

## DID YOU KNOW?

In our official course handbook it details the roles and responsibilities of all authorised team members working in confined spaces using a safe system of work, including the permit issuer, topman/overseer, entrant, isolation and the nominated rescue team.



**CALL US  
and quote  
RCST-OVER2  
RCST-OVER4  
FOR MORE INFO**

# Confined Space Emergency Rescue Training



## DESCRIPTION

This confined space training course will train the operatives in risk assessment and how to plan and carry out a comprehensive search and rescue. This course will instill the knowledge required to deal with situations as they arise and how to document all details. It should be remembered that rescue plans are required for all entrance into confined spaces but that rescue teams are required in any situation where the operatives detach from the winch line and self rescue is not viable in medium and high risk confined spaces.

This qualification is for those persons who are part of a dedicated rescue team. The courses will cover all aspects of planning, strategy, communications and emergency evacuation of a casualty. The event will be practical and theoretical with a staged emergency recovery leading to an assessment of abilities, with a structured report in line with the water authorities and emergency services.

## DURATION

3 days

## TYPE OF CERTIFICATE

Reece Accreditation including a certificate on completion  
City and Guilds (City and Guilds registration incurs a £38pp charge)

## MIN/MAX PERSONS ON COURSE

4/8

## SYLLABUS

The range of subjects covered on this course are;

- Search and rescue techniques
- The structure of a rescue team
- Oxygen administration
- Patient packaging
- Use of spinal boards and neck braces
- Roles and responsibilities of a rescue team
- Automatic external defibrillation
- Casualty extraction
- Communications during an emergency
- Practical exercises and assessments
- Management of a practical entry (assessed)

## LEARNING OUTCOMES

- Safe use of oxygen therapy
- Use of automatic external defibrillator
- Conducting emergency first aid
- Use of rescue equipment in accordance with manufacturers' instructions
- Follow procedures and work safely
- Deal with emergencies
- Patient packaging – using spinal boards, neck braces, splints, dressing etc.
- Understand legislation regarding rescue provision
- Casualty search and extraction techniques

## COURSE DETAIL

- Reasonable level of fitness required
- Level 1 medical qualification needed
- Must speak fluent English
- Please wear steel toe capped work shoes and standard workwear
- Lunch, tea and coffee will be provided
- Full course details sent out in advance
- Please arrive 15 mins early

A warning from the ACOP 2014;  
*"A major cause of death and injury in confined spaces incidents is due to ill-conceived attempts to save others who have collapsed or ceased to respond. You should not enter a confined space without ensuring you will not also be affected."*

**CALL US  
and quote  
RCST-ERT  
FOR MORE INFO**



# Confined Space Training - Awareness for Managers



## DESCRIPTION

This course is for persons who will not be required to enter the confined space but who are in a management position and responsible for committing others to supervise or work inside the confined space. This course is also aimed at a persons responsible for the development of risk assessments, safe systems of work and rescue plans rather than a "local" supervisor.

Delegates are required to appraise site conditions and generate a document pack which can be used by a live entry team at some future point, all document packs are assessed and certification is only issued to successful participants. Only on successful completion of the entire course and subject to the assessment criteria.

## DURATION

3 days (this course can only be taken if the candidate has already attained the High Risk Confined Space Entry qualification)

## TYPE OF CERTIFICATE

Reece Accreditation including a certificate on completion  
City and Guilds (City and Guilds registration incurs a £38pp charge)

## MIN/MAX PERSONS ON COURSE

4/8

## SYLLABUS

The subjects covered on this course are;

- Legislation recognition & classification
- Confined space risk assessment
- Development of safe systems of work
- Development of emergency arrangements & rescue planning
- Lockout of hazardous energy
- Issuing permit to work and associated controlling documents
- Confined space roles and responsibilities
- Gas detection (overview)
- Escape breathing apparatus (overview)
- Harness, tripod, davit, winch, block (overview)
- Ventilation (overview)
- Communication (overview)
- Management of a practical entry (assessed)

## LEARNING OUTCOMES

- An understanding of legislative, personal and medical requirements for confined space entry
- Characteristics of confined spaces - what is a confined space definition and classification
- Knowledge of types of personal protective equipment
- Understanding gas monitoring and awareness of atmospheric hazards
- Understanding of the types and characteristics of escape sets
- Understand the major hazards and hazardous atmospheres in relation to confined spaces
- Understand the importance of risk assessment and its practical application
- Be able to discuss safe systems of work and permits to work
- Discuss the importance of emergency planning
- Be able to define individual's roles and responsibilities, especially the overseer (topman) role

## COURSE DETAIL

- Reasonable level of fitness required
- Level 1 medical qualification needed
- Must speak fluent English
- Please wear steel toe capped work shoes and standard workwear
- Lunch, tea and coffee will be provided
- Full course details sent out in advance
- Please arrive 15 mins early
- Minimum age for course is 18

**CALL US  
and quote  
RCST-ATM  
FOR MORE INFO**



## Level 3 First Aid



### DESCRIPTION

It is a requirement of the Health & Safety law that employers provide a safe and healthy environment to work in. If your assessment of first aid needs highlights the need for qualified first aiders, then this level 3 qualification (level 6 in Scotland) will provide you with suitable, highly trained personnel.

This comprehensive three-day course covers a wide range of first aid emergencies, enabling all participants to deal with emergency situations with confidence in a prompt, safe and effective way. In addition, this course will include any protocol changes that may have arisen since their last training course.

The participants will receive a qualification to the highest level of First Aid, meeting the statutory requirements of the Health and Safety (First Aid) Regulations 1981.

### DURATION

A minimum of 18 hours spread over at least three days. Ideally, the course should be run over three consecutive days, but we have the flexibility to accommodate your specific needs if you so desire, providing it is completed within 10 weeks of starting the course and the training sessions last for a minimum of two hours.

### TYPE OF CERTIFICATE

NUCO certified. Summative practical assessment is ongoing by the instructor each day, along with a written assessment on each day. A three year Level 3 Award in First Aid at Work (Level 6 in Scotland) will be issued to the learner, subject to successful assessment. No external assessors are required.

### ACCREDITATION

NUCO

### MIN/MAX PERSONS ON COURSE

8/10

### SYLLABUS

The range of subjects on this course are;

- Legalities, responsibilities and reporting
- Resuscitation
- Assessment of the situation
- Dealing with an unresponsive casualty
- Bandaging
- Shock (including Anaphylaxis)
- Fractures and spinal injuries
- Heart attacks
- Choking
- Control of bleeding
- Head injuries
- Eye injuries
- Poisoning
- Chest injuries
- Sprains and strains
- Burns
- Asthma
- Diabetes
- Epilepsy
- Stroke

### LEARNING OUTCOMES

- Ability to deal, assess and monitor a casualty competently
- How to deal with electrical incidents
- How to record and report an accident
- Understanding of Control of Substances Hazardous to Health (COSHH)
- How to deal with an unresponsive but breathing casualty
- How to deal with an unresponsive and not breathing casualty, including the use of an automated external defibrillator (AED)

### COURSE DETAIL

- Reasonable level of fitness required
- Must speak fluent English
- Please wear steel toe capped work shoes and standard workwear
- Lunch, tea and coffee will be provided
- Full course details sent out in advance
- Please arrive 15 mins prior to course start

Terms and conditions apply

**CALL US  
and quote  
RCST-L3F  
FOR MORE INFO**



## REECE SAFETY PRODUCTS LIMITED TRAINING TERMS & CONDITIONS OF SALE

### DEFINITIONS

“Agreement”: means the contract you have entered into by purchasing the services to which these terms and conditions apply.

“Customer”: person, firm or company to whom Services are provided

“Reece”: means Reece Safety Products Limited with registered office Unit B9, Lowfields Close, Elland HX5 9DX.

“Services”: services to be provided by Reece to the Customer under the Agreement which include public scheduled courses and on-site training courses.

“In-house training”: refers to training delivered by Reece on Customer premises.

“Public courses”: refers to training delivered by Reece to multiple customers at an Reece or alternative location from that of the Customer.

“Engagement”: refers to each individual piece of bespoke In-house training work requested by the Customer.

“Bespoke training”: refers to training tailored to a Customer’s specific requirements including but not limited to creation of new and tailored training materials.

“Working Day”: every week day apart from Saturday, Sunday, and United Kingdom statutory holidays.

“Third Party”: refers to any outside party, contractor or consultant which Reece may choose to deliver the Services.

“Quote”: refers to the price quoted in a proposal document, contract or any other form of formal communication.

### GENERAL

2.1 These terms and conditions should be read and accepted by you prior to your purchase. You accept that by purchasing any of our Services, you agree to be bound by these terms and conditions.

2.2 By placing an order for Services from Reece you warrant that you are legally capable of entering into binding contracts on behalf of the Customer, and acknowledge that where a purchase order is issued for the ordering of such services, these Terms and Conditions will prevail over any terms and conditions contained within any such purchase order.

2.3 Where a customer has a specific agreement or contract in place for alternative services provided by Reece, the Customer acknowledges that for any instances of training, and/or where there is a conflict of terms and conditions, these Terms and Conditions will apply for any training services unless expressly acknowledged in writing by Reece.

2.4 Reece reserves the right to modify these T&Cs without prior notice. When changes are made, Reece will notify the changes on the Company’s website ([www.reecesafety.co.uk](http://www.reecesafety.co.uk)). If the Customer does not accept any changes, the Customer shall promptly notify Reece of such non-acceptance and in such case, the old T&Cs shall govern for the remaining term of Agreement and the new T&Cs shall apply to any new Agreement.

2.5 Reece shall provide the Services requested and as described in any Reece proposal, exercising reasonable skill and care at all times.

2.6 The Agreement shall be governed by English Law. Any dispute under this Agreement shall be submitted to the exclusive jurisdiction of English courts.

2.7 The parties are each independent contractors. Nothing in this Agreement shall give rise to a partnership, joint venture, agency or any such other relationship between the parties. Neither party shall claim to be a legal representative, partner, agent, franchisee or employee of the other party.

2.8 Reece may assign or sub-contract its obligations or rights under this Agreement to a competent third party in whole or in part. The Customer may not assign this Agreement in whole or in part except with Reece express written consent.

2.9 By providing personal data relating to your employees or agents to us, you confirm that you are entitled to disclose that data to us under the terms of the Data Protection Act 1998 and related legislation and that we are entitled to process such data for the purposes of providing your contracted Services. The Reece Safety privacy policy is available on request or at <https://www.reecesafety.co.uk/privacypolicy>

### CUSTOMER OBLIGATIONS

3.1 Where Reece are required to perform services on Customer premises, the Customer agrees to provide a full and safe working environment for Reece staff and

contractors including any relevant safety wear and equipment as may be necessary in performing the required services.

3.2 The Customer agrees to ensure that Reece staff and any sub-contractors engaged by Reece are informed of all relevant health & safety requirements of the Customers site at the outset of any services performed.

3.3 The Customer agrees to have in place suitable employer’s liability and public liability insurance at all times that services are performed by Reece on the Customer’s premises.

### FEES & PAYMENT

4.1 Any prices quoted to the Customer for the provision of Public Courses will be based on prevailing price lists in force at that time. Such price lists are subject to change and amendment at any time.

4.2 Prices quoted for Public Courses which are run from an Reece venue include day conference venue fees but exclude any required overnight accommodation where applicable which will be subject to a separate fee and terms and conditions.

4.3 Prices quoted for the provision of In-house training are provided on a bespoke basis, dependent on the Customers’ requirements on a job by job basis, and are only valid for 30 days from the date of any written quote.

4.4 Any discounts offered by Reece to the Customer for the provision of services are offered against published price lists or standard rates in force at the date of quote, and such discounts or offers are unable to be used in conjunction with any other offers available at that time.

4.5 All fees are quoted exclusive of VAT, which will be charged at the prevailing rate.

4.6 All fees quoted are for the provision of services only and exclude any travel or subsistence or other expenses which, other than mileage, will be payable by the Customer in accordance with Reece’s internal expenses policy. Such travel and subsistence will be recharged to the Customer at cost. Mileage will be recharged to the Customer at 45 pence per mile. Unless stated in the quotation that these expenses are fully included.

4.7 All fees are subject to annual or other such periodic review and amendment in order to take into account the changing nature and variation of wages, materials and other costs in providing the services to the customer. Reece reserves the right to accordingly adjust fees at any time to take account of such increases in cost.

### PAYMENT TERMS

4.8 All training courses (both Public courses and In-house training) are billable in advance and are payable 15 days prior to the course delivery date, or in the case of bespoke training courses, the later of 15 days prior to the course delivery date or the customer approval of the course design, but in any event prior to the commencement of the course. Reece will allow training bookings to be taken on the receipt of a Purchase Order.

4.9 Any Public courses booked within 15 days of the course commencement date are payable in order to confirm a candidates place on the course.

4.10 Reece reserve the right to refuse attendance on any Public course which has not been paid in advance. Reece further reserve the right to refuse to deliver any In-house training which isn’t paid in advance, and will be subject to the cancellation terms as set out in clause 5.

4.11 Any fees outstanding beyond agreed terms are subject to a late payment interest charge of 5% above the Bank of England base rate prevailing at the end of each month that such debt is outstanding.

4.12 The Customer warrants in all instances that where a valid Customer purchase order is required to be quoted on any invoices, the Customer will provide such purchase order details as necessary in order to facilitate payment in good time and for the full value of any service provided.

4.13 Reece is not liable under any circumstances for the failure of the Customer to provide any necessary purchase order information as may be required, and the Customer accordingly acknowledges that all fees are due and payable according to Reece’s terms and conditions in the instances where a valid purchase order has failed to be provided.

### CANCELLATION & TERMINATION

5.1 Cancellation charges including those levied for transfers, deferrals or postponements of services are charged in accordance with the table of charges set out below. All charges are exclusive of VAT.

5.2 Charges are applied to the full list price of any course or standard day rates in force at the date of cancellation.

5.3 All cancellations, transfers, deferrals or postponements must be received in writing by Reece.

TRAINING	21-25 DAYS	10-20 DAYS	LESS THAN 10 DAYS
CANCELLATION %	20%	50%	100%
TRANSFER/ POSTPONEMENT FEE %	-	25%	50%

5.4 Reece reserves the right to cancel, defer or postpone any training or consultancy services at any time at its discretion with no liability to the Customer. In such circumstances Reece will offer the Customer an alternative date. Reece will not be liable for any expenses incurred by the Customer within 10 working days of the course date; thereafter Reece will reimburse the Customer the lower of the expense incurred or £100 in total on production of supporting receipts. Reece will not compensate the Customer for any time spent travelling or being away from the office as a result of such cancellation.

5.5 Where Reece cancels a course and is unable to offer an alternative date to the Customer, then the Customer will be refunded in full any fees paid. For the avoidance of doubt Reece is under no obligation to provide a refund where an alternative date is offered but is refused by the Customer.

5.6 The Customer may substitute course attendees as required as long as Reece is informed in writing with no less than 10 days' notice. In such instances it is the Customers responsibility to ensure that the attendee has any pre requisite knowledge and/or undertaken any required pre-reading in order to attend the course. Reece reserve the right to charge an administration fee of £50 for each substituted attendee.

## TERMINATION OF AGREEMENT

5.7 This Agreement will continue to apply to all training and consultancy arrangements provided to the Customer until such time that terms and conditions are changed.

5.8 Reece may at its discretion terminate or suspend this Agreement upon 10 days' notice to the customer if:

- the Customer ceases to trade or otherwise terminates business operations;
- becomes insolvent or seeks protection under any bankruptcy, receivership, trust deed, creditors arrangement, composition or comparable proceeding or any proceeding is instituted against the Customer;
- fails to make payment in accordance with the terms and conditions of this Agreement

5.9 Reece may at its discretion immediately terminate or suspend this Agreement if the Customer commits a material breach, or a series of breaches the combination of which constitutes a material breach and the Customer fails to remedy such breach(es) with 10 days after receipt of notice giving details of breach(es) and requiring them to be remedied.

## STAFF & CONTRACTORS

6.1 Reece shall be entitled to subcontract, delegate or assign the provision of any services or any of their rights or duties under these terms. Reece shall have discretion as to which of their employees or self-employed agents, contractors or third parties ("Third Party") are assigned to perform the services.

6.2 The Customer agrees to pay Reece's introduction fee as set out in clause 6.3 in the event that the Customer, any subsidiary, group or associated company or any person connected with the Customer (directly or indirectly) recruit as an employee or engage as self-employed contractor any employee or Third Party of Reece if that employee or Third Party was involved in the provision of services to the Customer by Reece in the 12 month period prior to their engagement by the Customer.

6.3 In the event that the Customer engages an employee or Third Party of Reece as set out in clause

6.2, the Customer agrees to pay an introduction fee (which shall be immediately due and payable) equal to 50% of the annual remuneration (including pay and benefits) payable by the Customer to the relevant individual in the year following the commencement of that individual's employment.

## INTELLECTUAL PROPERTY & CONFIDENTIALITY

7.1 All intellectual property rights of any nature (including copyright) created or provided by Reece or its employees or Third Parties shall be and remain the property of Reece

and any such materials shall be licensed to the Customer for internal use only, unless prior agreement is made with the customer.

7.2 The Customer undertakes to keep all Publications materials created by Reece confidential and not to copy, publish or distribute any such information, materials or documents to any third party without Reece's prior written consent (save where such information is in the public domain or the Customer is required to disclose such information by law).

7.3 Each party agrees with the other not to divulge or allow to be divulged any confidential information relating to the other's business or affairs other than to its employees or subcontractors who need to know such information or where the other party has consented to such disclosure.

## FORCE MAJEURE

8.1 Reece shall be entitled to delay or cancel delivery of any services or to reduce the amount of services delivered if it is prevented from or hindered or delayed in the provision of services through any circumstances beyond its reasonable control including strike, lock-out, accident, war, government action, national emergency, act of terrorism, protest, riot, civil commotion, explosion, flood, epidemic, fire.

## LIABILITY & INSURANCE

9.1 Reece's aggregate liability including the liability of their partners, agents, subcontractors and employees in respect of any services provided to the Customer by Reece in connection with your service contract will be limited to the total fees payable by the Customer for the service.

9.2 Reece shall not be liable to the Customer in respect of any event of default for loss of profits, goodwill or any type of indirect or consequential loss, including the acts or omissions of the Customer, even if Reece had been advised of the possibility of the Customer incurring the same.

9.3 Nothing in these terms will limit or exclude Reece's liability for death or personal injury arising as a result of Reece's negligence.

9.4 The Customer shall to the fullest extent permitted in law, indemnify and hold harmless Reece and its Third Parties from and against any and all claims, damages, losses or expense, arising out of or resulting from any injury or damage sustained on the Customer's premises or for which the Customer is responsible.



# Isolation

The Electricity at Work regulations 1989 (EAW Regulations) apply to almost all places of work. HSG85 is a generic guidance document covering safe working practices for work on electrical equipment and is produced to support the regulations.

## “Regulation 12

*‘isolation’ means the disconnection and separation of the electrical equipment from every source of electrical energy in such a way that this disconnection and separation is secure.*

## Regulation 13

*Adequate provisions shall be taken to prevent electrical equipment, which has been made dead in order to prevent danger while work is being carried out on or near that equipment, from being electrically charged during that work if danger may thereby arise.*

## Regulation 19

*Every employer shall ensure that where appropriate work equipment is provided with suitable means to isolate it from all its sources of energy.”*

The Provision and Use of Work Equipment Regulations 1998 states;

*“These Regulations, often abbreviated to PUWER, place duties on people and companies who own, operate or have control over work equipment. PUWER also places responsibilities on businesses and organisations whose employees use work equipment, whether owned by them or not.”*

*“You must ensure that the work equipment you provide meets the requirements of PUWER. You should ensure that it is:*

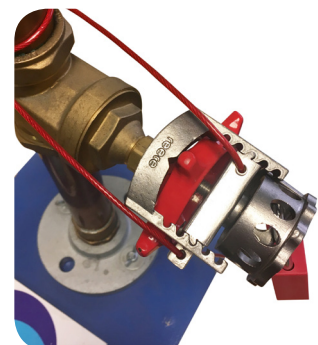
- suitable for use, and for the purpose and conditions in which it is to be used;*
- maintained in a safe condition for use so that people’s health and safety is not at risk; and*
- inspected, in certain circumstances, to ensure that it is and continues to be safe for use. Any inspection should be carried out by a competent person (this could be an employee if they have the necessary skills, knowledge and experience to perform the task) and a record kept until the next inspection.”*



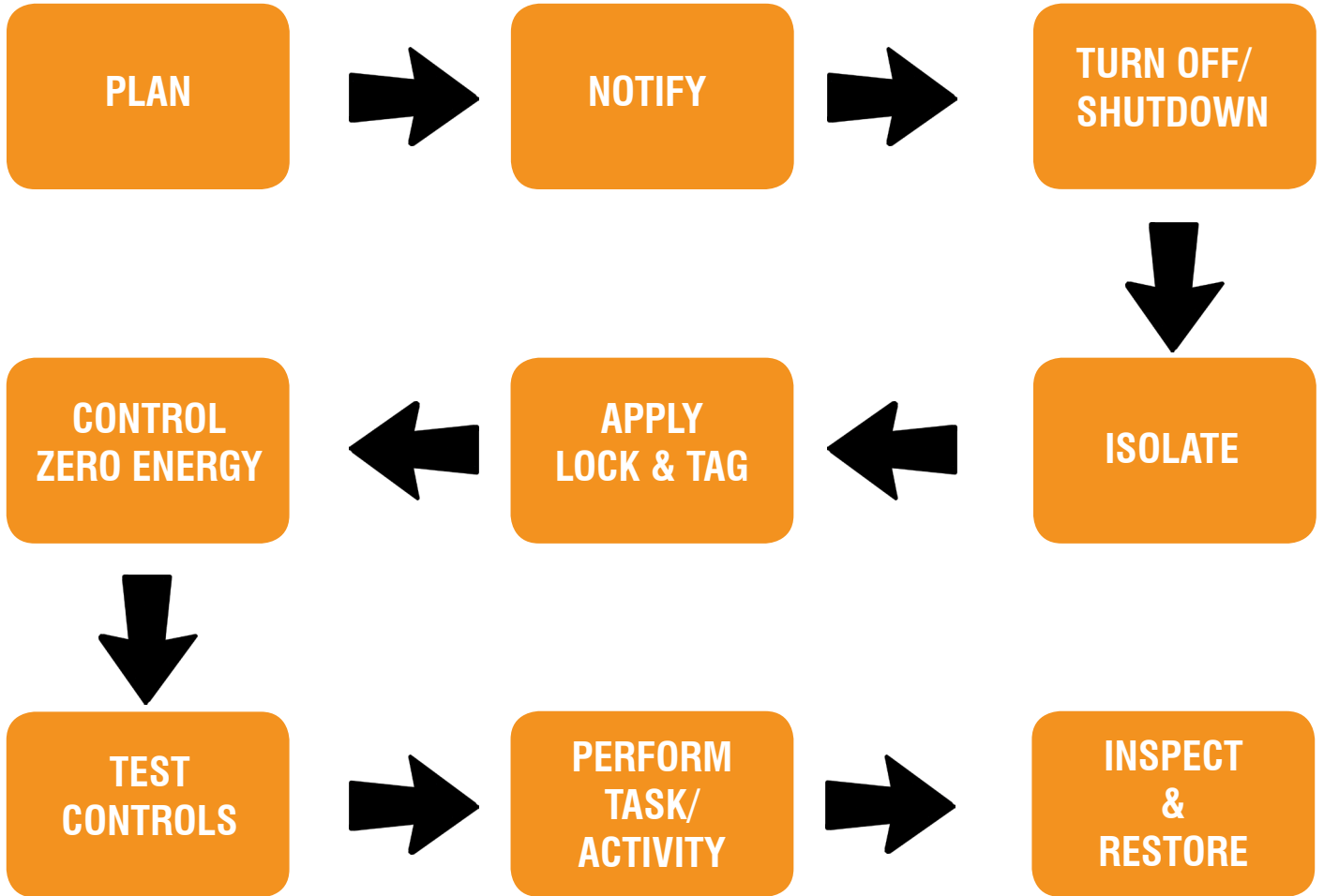
## Why reece

Our range has been developed over 15 years by working with our customers on building bespoke lockout solutions. We can build many products to suit your specific requirements and can provide fully customised padlocks, tags and lockout stations.

We know that often you need products quickly so carry £3m of stock in our 30,000 sq ft warehouse in Elland, West Yorkshire.



# 9 Steps of Safe Isolation



Every year thousands of workers get killed or injured across the Globe while performing repairs or maintenance on industrial equipment or machinery. Many of these accidents are caused by the uncontrolled release of energy – Electrical, Chemical, Thermal, Kinetic – all forms can be deadly. Regulations exist requiring that all energy sources are isolated and “locked out” while machines are being serviced or repaired.

“Lockout” describes a procedure in which power switches, valves, levers, etc are blocked from operation to isolate the energy source. During this process, special plastic caps, boxes or cables (lockout devices) are used to cover the switch or valve and are secured with a padlock where the last worker determines when it can be re-energised. “Tagout” refers to the practice of attaching a WARNING or DANGER sign or even an individual note to an energy switch such as those described above. In many cases, both actions are combined into Lockout/Tagout so that the worker is no longer able to reactivate the machine and at the same time, is informed about the process to take further actions (e.g. calling the responsible colleague or commencing the next service step). Many companies issue each worker authorised to apply Lockout/Tagout with their own personalised padlock and/or tag imprinted with his/her name. Legislation requires all employers to use Lockout/Tagout equipment to remove the risk of serious injuries or fatalities. It’s the responsibility of the individuals to strictly follow whichever system has been chosen for their workplace.



# Gas Detection

As per the Confined Space Regulations, ACOP 2014-

*“Prior to entry, the atmosphere within a confined space should be tested to check the oxygen concentration or for the presence of hazardous gas, fume or vapour.*

*Testing should be carried out where knowledge of the confined space (eg from information about its previous contents of chemicals used in a previous activity in the space) indicates that the atmosphere might be contaminated previously, was ventilated as a consequence, and needed to be tested to check the result.”*

*“The choice of monitoring and detecting equipment will depend on the circumstances and knowledge of possible contaminants and you may need to take advice from a competent person when deciding on the type that best suits the situation.”*

At Reece we offer a wide variety of gas detectors for purchase or hire alongside a calibration service ensuring devices are fully compliant and in working order.



Type	Manufacturer	Page
Single Gas	<ul style="list-style-type: none"> <li>Crowcon Gasman</li> <li>BW GasAlert Extreme</li> <li>Scott Protégé SG</li> <li>And accessories</li> </ul>	20-21
Four Gas	<ul style="list-style-type: none"> <li>MSA Altair 4X</li> <li>MSA Altair XR</li> <li>Crowcon Tetra 4</li> <li>BW Quattro</li> <li>BW Microclip XL</li> <li>Scott GMI PS200</li> <li>And accessories</li> </ul>	22-25
Five Gas	<ul style="list-style-type: none"> <li>Crowcon GasPro 5</li> <li>BW GasAlert Micro 5</li> <li>MSA Altair 5X</li> <li>And accessories</li> </ul>	26-27
Area Monitors	<ul style="list-style-type: none"> <li>Crowcon Detective +</li> <li>OLDHAM BM25</li> </ul>	28

[Source] The Confined Space Regulations 1997 - Approved Code of Practice and guidance - Health and Safety Executive

# Gas Detection - Single Gas and Accessories

## CROWCON GASMAN

Gasman is a range of rugged, compact single gas personal monitors designed for use in the toughest environments. Its stunningly compact and lightweight design makes it ideal for use in industries such as oil and gas, chemical plants and waste and water works.

- Weight: 130g
- Tough polycarbonate housing - water and dust resistant to IP65
- Full overmoulding - high impact resistance
- 2 levels of instantaneous alarm and TWA alarms for toxic versions
- 95dB audible alarm
- Vivid twin red/blue visual alarm - if ambient noise is high, Gasman alerts you by vibrating and with the high impact blue/red LED alarms
- Real-time TWA and peak display options
- Fully interchangeable intelligent sensor modules
- One button operation - quick and easy to use
- Backlit LCD display for gas diagnostics and operating status - easy to read
- Data and event logging are available as standard, and there is a built-in 30 day advance warning when calibration is due
- Rechargeable versions for all gas types – charger purchased separately - 12 hour run time
- Non-rechargeable versions for oxygen and toxic gases



Rechargeable	Battery	Gas
CRGS-AA-A-001-G	CRGS-AA-B-001-G	CH <sub>4</sub> Methane - LEL% 0-100%
CRGS-AG-A-001-G	CRGS-AG-B-001-G	O <sub>2</sub> Oxygen - 0-25% Vol
CRGS-AI-A-001-G	CRGS-AI-B-001-G	H <sub>2</sub> S Hydrogen Sulphide 0-100ppm
CRGS-AH-A-001-G	CRGS-AH-B-001-G	CO Carbon Monoxide 0-500ppm
CRGS-CS-A-001-G	CRGS-CS-B-001-G	CO Carbon Monoxide 0-500ppm H <sub>2</sub> Filtered
CRGS-AN-A-001-G	CRGS-AN-B-001-G	Cl Chlorine 0-20ppm
CRGS-AR-A-001-G	CRGS-AR-B-001-G	NH <sub>3</sub> Ammonia 0-100ppm
CRGS-CK-A-001-G	CRGS-CK-B-001-G	ClO <sub>2</sub> Chlorine Dioxide 0-1ppm
CRGS-HG-A-001-G	CRGS-HG-B-001-G	CO <sub>2</sub> Carbon Dioxide IR (Safe Area Only)



## CROWCON GASMAN ACCESSORIES

- External filter - for use in high dust environments
- Flow cap assembly - to enable calibration or manual gas sampling
- Aspirator assembly - for drawing gas samples
- Shoulder strap - which can be combination with the chest harness plate enable the detector to be worn over the shoulder
- Chest harness strap kit - consists of two straps (harness plate not included)
- Chest harness strap kit including harness plate
- Leather carry case - enables unit to be worn either on a belt or with a shoulder strap
- Hard hat clip - to enable Gasman to be attached to a safety helmet
- Single way multi-regional power supply



Code	Description
CRC02132	Gasman External Filter
CRM04581	Flow Cap Assembly
CRC01937	Aspirator Assembly
CRC01843	Shoulder Strap
CRC01844	Chest Harness Strap Kit excluding harness plate
CRC011304	Chest Harness Strap Kit including harness plate
CRC01983	Leather Carry Case
CRC01953	Hard Hat Clip
CRC011318	Multi-regional power supply



The ACOP 2014 explains the importance of retesting;

*“Where the atmosphere in the space may not be safe to breathe and requires testing, the findings of the risk assessment should indicate whether testing should be carried out on each occasion that the confined space is re-entered, even where the atmosphere initially was found to be safe to breathe. Regular monitoring may be necessary to ensure that there is no change in the atmosphere while the work is being carried out, particularly where there is a known potential for adverse changes during the work.”*

# Gas Detection - Single Gas and Accessories

## GASALERT EXTREME

A wide range of user options, multi-language display and datalogging functionality make the GasAlert Extreme an ideal solution for many applications.

- Weight: 82g
- Equipped with internal vibrating alarm for high noise areas
- Secure and accurate history with datalogging option
- Tamper-proof settings with passcode protection
- Continuous LCD shows real-time gas concentration
- Compact and lightweight design makes it comfortable to wear
- Water-resistant
- Simple automatic calibration procedure; compatible with BW MicroDock II automatic test and calibration station
- Typical battery life: 1.5 year battery life (typical) with replaceable 3V battery



Code	Gas
BWGAXT-A-DL	Ammonia NH <sub>3</sub> 0-100ppm
BWGAXT-M-DL	Carbon Monoxide CO 0-1000ppm
BWGAXT-M2-DL	Carbon Monoxide CO (Resistant to H <sub>2</sub> CO-H) 0-1000ppm
BWGAXT-C-DL	Chlorine Cl 0-1ppm
BWGAXT-V-DL	Chlorine Dioxide ClO <sub>2</sub> 0-1ppm
BWGAXT-X-DL-2*	Oxygen O <sub>2</sub> 0-30% Vol
BWGAXT-G-DL	Ozone O <sub>3</sub> 0-1ppm
BWGAXT-S-DL	Sulfur Dioxide SO <sub>2</sub> 0-100ppm

## GASALERT EXTREME ACCESSORIES

- Concussion-proof boot with stainless steel alligator-style clip - heavy duty protection for extreme conditions
- Hard hat clip (non conductive) - to enable gas detector to be worn hands free on a protective hat
- Chest harness - to enable gas detector to be worn hands free
- Manual aspirator pump kit - with probe
- Belt clip with screw



Code	Description
BWGA-BALERT	Concussion-proof Boot
BWGA-HC-1	Hard Hat Clip
BWGA-CL-1	Chest Harness
BWGA-CH-2	Manual Aspirator Pump Kit
BWGA-AS02	Belt Clip with Screw

## PROTÉGÉ SG

The Scott Protégé SG is a single gas detector that can detect 13 gases, providing maximum flexibility to deal with unknown gases. Scott Protégé SG comes with interchangeable smart sensors, including low power IR and electrochemical options.



- Weight: 150g
- Swappable smart sensors
- Visible alarms
- Available in red or grey
- ATEX and IECEx certified
- 18 hour battery life
- Powered by a rechargeable lithium battery

Red	Grey	Gas
SCRSG-RL20N-B	SCRSG-GL20N-B	ATEX O <sub>2</sub>
SCRSG-RL20N-C	SCRSG-GL20N-C	ATEX H <sub>2</sub> S 0-500ppm
SCRSG-RL20N-D	SCRSG-GL20N-D	ATEX CO STD 0-1000ppm
SCRSG-RL20N-E1	SCRSG-GL20N-E1	ATEX H <sub>2</sub> S 0-100ppm
SCRSG-RL20N-F	SCRSG-GL20N-F	ATEX SO <sub>2</sub>
SCRSG-RL20N-G	SCRSG-GL20N-G	ATEX Cl <sub>2</sub>
SCRSG-RL20N-H	SCRSG-GL20N-H	ATEX NO <sub>2</sub>
SCRSG-RL20N-I	SCRSG-GL20N-I	ATEX ClO <sub>2</sub>
SCRSG-RL20N-J	SCRSG-GL20N-J	ATEX NH <sub>3</sub>
SCRSG-RL20N-K	SCRSG-GL20N-K	ATEX HCN
SCRSG-RL20N-L	SCRSG-GL20N-L	ATEX O <sub>3</sub>
SCRSG-RL20N-M	SCRSG-GL20N-M	ATEX CO 0-2000ppm (Hydrogen H <sub>2</sub> resistant)
SCRSG-RL20N-N	SCRSG-GL20N-N	ATEX NO
SCRSG-RL20N-U	SCRSG-GL20N-U	ATEX PH <sub>3</sub>



# Gas Detection - Four Gas and Accessories

## MSA ALTAIR 4X



The Altair 4X is an extremely durable multigas detector that simultaneously measures up to four gases. This versatile portable detector is a perfect match for industries ranging from fire fighting to welding, and its digital sensor output makes it less likely to suffer from RF interference.

- Weight: 222g
- Economical construction saves users more than 50% on calibration gas, replacement sensors and maintenance
- Four-year sensor life means detector lasts 60% longer than the industry average
- Unit uses 50% less calibration gas per minute than the average detectors within the industry
- Two-tox CO/H<sub>2</sub>S sensor removes practically all cross-channel interference
- Large buttons and high-contrast screen make operation easy in low-light conditions
- Ribbed rubber housing provides secure grip and high durability
- Unit features 95+ db alarm and ultra-bright LEDs
- Exclusive end-of-sensor warning cautions user when unit's sensor needs to be changed
- MotionAlert option tells others that user has become immobile
- InstantAlert provides manual alarm to alert others of a dangerous situation
- Rugged unit designed to withstand a drop of up to 20ft (6m)
- Equipped with a rechargeable battery
- 24-hour run time exceeds the industry average by 71%



Charcoal	Glow	Gas
MSA10110715	MSA10110760	LEL%, O <sub>2</sub> , H <sub>2</sub> S, CO (including charger)
-	MSA10119730	LEL%, O <sub>2</sub> , H <sub>2</sub> S, CO

## MSA ALTAIR 4X & 4XR ACCESSORIES

- Altair pump probe with charger
- Multifunctional carrying case
- Shoulder strap
- 240V mains charger
- 12V vehicle charger (4X only)



Code	Description
MSA10152668	Pump probe with charger
MSA10150279	Carry case
MSA10150259	Shoulder strap
MSA10086638	240V mains charger
MSA10095774	12V vehicle charger



## MSA ALTAIR 4XR



The ALTAIR 4XR can also provide real-time incident awareness to team members, supervisors, safety managers and others when paired with the MSA ALTAIR Connect app via a Bluetooth® wireless connection.

- Weight: 228g
- Sense gas 2 times faster than the industry average with our XCell® sensors
- Quickly update MSA ALTAIR 4XR settings via the ALTAIR Connect app (available on the Google Play Store)
- Send event notifications via text message with the ALTAIR Connect app
- Survives 25 drops from 4 feet (1.2 meters) (MIL-STD-810G drop protection)
- Can survive a 25-foot (7.5-m) drop onto concrete
- Dust and waterproof IP68 rating (2 meters for at least 1 hour)
- 4-year instrument & sensor warranty
- Confirm compliance quickly with the Bump LED & on-screen checkmark
- Bump and calibrate with 1/2 the test gas
- MotionAlert option tells others that user has become immobile
- User-activated InstantAlert notifies others of a potentially dangerous situation
- Rechargeable Li-polymer battery, 24-hour run-time < 4 hour charge time



Charcoal	Glow	Gas
MSA10178573	MSA018569	LEL%, O <sub>2</sub> , H <sub>2</sub> S, CO
MSA10178582	-	CH <sub>4</sub> - LEL%, O <sub>2</sub> , H <sub>2</sub> S-L <sub>2</sub> , CO (charger not included)

# Gas Detection - Four Gas and Accessories

## BW QUATTRO

Rugged and reliable, the GasAlertQuattro four-gas detector combines a comprehensive range of features with simple one-button operation.



- Weight: 338g
- IntelliFlash verifies operation and compliance to both the user and supervisors from up to 20ft
- One-button operational simplicity
- Easy to identify icons for onsite auditing and compliance
- Audible, visual and vibrating alarm
- Heartbeat pulses continually during normal operation
- Extensive datalogging and event logging capability
- Typical 18 hour battery life
- Powered by either rechargeable batteries (charger included) or alkaline batteries

Rechargeable	Battery	Gas
BWQT-XWHM-R-Y-UK	BWQT-XWHM-A-Y-UK	4 Gas (LEL%, O <sub>2</sub> , H <sub>2</sub> S, CO)
BWQT-XWHO-R-Y-UK	BWQT-XWHO-A-Y-UK	3 Gas (LEL%, O <sub>2</sub> , H <sub>2</sub> S)
BWQT-XWOM-R-Y-UK	BWQT-XWOM-A-Y-UK	3 Gas (LEL%, O <sub>2</sub> , CO)
BWQT-XWOO-R-Y-UK	BWQT-XWOO-A-Y-UK	2 Gas (LEL%, O <sub>2</sub> )
BWQT-OWHO-R-Y-UK	BWQT-OWHO-A-Y-UK	2 Gas (LEL%, H <sub>2</sub> S)

## BW MICROCLIP XL

The industrial GasAlertMicroClip XL is the world's most popular multi-gas portable detector, delivering long runtime and reliability, plus small size, low cost and the easiest user experience.



- Weight: 190g
- XL for standard operation with 2-year warranty
- Compact, lightweight and easy to use
- One-button operation
- Rechargeable battery
- Flashing green IntelliFlash
- Typical 18 hour battery life
- Powered by a rechargeable battery pack (charger included)



Yellow	Black	Gas
BWMCXL-XWHM-Y-UK	BWMCXL-XWHM-B-UK	3 Gas LEL%, O <sub>2</sub> , CO
BWMCXL-XWHO-Y-UK	BWMCXL-XWHO-B-UK	3 Gas LEL%, O <sub>2</sub> , H <sub>2</sub> S
BWMCXL-XWOM-Y-UK	BWMCXL-XWOM-B-UK	4 Gas LEL%, O <sub>2</sub> , H <sub>2</sub> S, CO

## BW QUATTRO AND GAS ALERT MICRO XL ACCESSORIES

- Confined space kit - including filters fleet manager software, probe, carry holster, filter kit, calibration cap with 1ft of hose, 0.5 LPM regulator and carry case with foam inserts
- Carry case with foam inserts
- Concussion proof boot
- Filter kit - including 5 filters
- Chest harness
- Aspirator pump
- Probe
- Power adapters



Code	Description
BWQT-CK-DL	Confined space kit
BWQT-CK-CC	Carry case
BWGA-BQT	Concussion proof boot
BWQT-AF-K1	Filter kit
BWGA-CH-2	Chest harness
BWQT-AS01	Aspirator pump
BWGA-PROB1-1	Probe
BWGA-VPA-1	Vehicle adapter
BWGA-PA-1-UK	240V adapter

When choosing your gas detector, the ACOP 2014 explains; *“The choice of monitoring and detecting equipment will depend on the circumstances and knowledge of possible contaminants and you may need to take advice from a competent person when deciding on the type that best suits the situation. For example, when testing for toxic or asphyxiating atmospheres suitably calibrated chemical detector tubes or portable atmospheric monitoring equipment may be appropriate.”*



# Gas Detection - Four Gas and Accessories

## CROWCON TETRA 4

The T4 contains a wide range of powerful features to make everyday use easier and safer. Offering you compliance, robustness and low cost of ownership in a simple to use solution.



- Weight: 282g
- Standard alarm in UK flammable 20%, O<sub>2</sub> 19/23.5%vol, H<sub>2</sub>S 5ppm, CO 30ppm
- TWA resume
- Intuitive menu system ensures T4 can be operated wearing gloves with minimal training
- Rugged design including integrated rubber boot, drop tested to 4 metres, water & dust resistant to IP65 & IP67
- Positive safety indicator, green light – working safely red light – attention required
- Dedicated sensors, one sensor for every gas ensures effective, fast and reliable detection
- Audible 95db alarm, bright red/blue led's and vibrating alerts
- 18 hour battery life, including battery charger
- Charger included



Code	Gas
CRT4-HOCA-EA-CRD	4Gas - H <sub>2</sub> S, O <sub>2</sub> , CO, CH <sub>4</sub> , LEL%
CRT4-ZOCA-EA-CRD	4Gas - H <sub>2</sub> S, O <sub>2</sub> , CO (H <sub>2</sub> Resistant), CH <sub>4</sub> LEL%
CRT4-HOZA-EA-CRD	3Gas - H <sub>2</sub> S, O <sub>2</sub> , CH <sub>4</sub> , LEL% (Standard region approval)
CRT4-ZOZA-EA-CRD	3Gas - O <sub>2</sub> , CO, CH <sub>4</sub> , LEL%
CRT4-ZOCZ-EA-CRD	3Gas - O <sub>2</sub> , CO (H <sub>2</sub> Resistant), CH <sub>4</sub> , LEL%
CRT4-HOCA-H2-EA-CRD	2Gas - O <sub>2</sub> , CHE, LEL%
CRT4-ZOCA-H2-EA-CRD	2Gas - O <sub>2</sub> , CO

## CROWCON TETRA 4 ACCESSORIES

- Filter plate
- Filter plate pack
- Aspirator kit - including 20m hose and plate
- Aspirator plate
- Aspirator bulb
- 1m probe
- Telescopic probe
- Charger - vehicle and mains



Code	Description
CRT4-EXT-F	Filter plate
CRT4-EXT-F-10	Filter plate pack
CRT4-ASP-KIT	Aspirator kit
CTR4-ASP-CAP	Aspirator plate
CRAC0504	Aspirator bulb
CRC01097	1m probe
CRC0157	Telescopic probe
CRCH0102	Charger - mains
CRCH0106	Charger - vehicle



## GMI PS200 MULTI GAS MONITOR

This robust and accurate portable gas detector, the Personal Surveyor (PS200 Series) provides unrivalled protection in confined space applications with audible and visual alarms in the event of exposure to flammable or toxic gases. The PS200 is suitable for a host of applications in a variety of industries. Pre-entry checking can be carried out with the optional internal sampling pump, and diffusion operation ensuring maximum battery life in confined spaces.



- Weight: 215g without pump, 230g with pump
- Detects LEL 0-100% H<sub>2</sub>S 0-100ppm CO 0-1000ppm O<sub>2</sub> 0-25%
- Simple 1-button operation
- Audible, visual and vibrating alarms
- Internal pump (optional)
- Lightweight yet robust construction
- Sensor integrity checking
- Ease of maintenance
- 14 hour battery life
- Charger included

Code	Gas
SCPS200-Quad	4Gas LEL%, O <sub>2</sub> , CO, H <sub>2</sub> S





# Gas Detection - Four Gas and Accessories

## GMI PS200 MULTI GAS MONITOR ACCESSORIES

- Rubber boot - black, grey, yellow, red, orange blue, green
- Carry case
- 5-way multi charger
- In-vehicle charger



Code	Description
SCPS200-Quad-RB	Rubber boot
SCPS200-Quad-CC	Carry case
SCPS200-Multi-5Way	5-way multi charger
SCPS200-VC	In-vehicle charger

## GMI PS200 MULTI GAS MONITOR AUTO BUMP AND CALIBRATION STATION



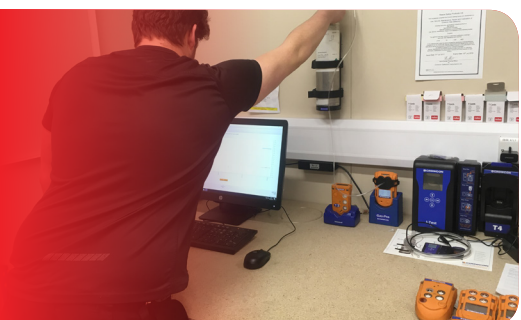
GMI has developed a compact, robust and easy to use Auto Bump and Calibration station that can provide full bump and calibration options. Data transfer is facilitated using a USB memory stick with standalone software that is simple to set up and customise based on end users' specifications. Standalone, PC, and ethernet versions are available.

- Simple user interface
- Full bump, calibration and charging options
- Bump/calibration results storage
- Stand-alone, PC or ethernet options
- Robust construction

Code	Description
SC64052	Auto Bump & Calibration Station (6mm fittings & incl. PSU and USB stick with Standalone software)
SC64052Q	Auto Bump & Calibration Station (1/4 in. fittings & incl. PSU and USB stick with Standalone software)
SC99553	flexiCal Plus software for PC
SC99118	Demand Flow Regulator
SC64265	Tubing with 6mm Push Fit Connector
SC64051	Manual Bump Kit (no power required) (c/w Combi Test Gas 99146, Direct Flow Regulator, tubing & sample line connector)
SC99146	Combi Test Gas Cylinder (2.5% CH <sub>4</sub> , 500ppm CO, 50ppm H <sub>2</sub> S, 18% O <sub>2</sub> , balance N <sub>2</sub> )
SC64060	Test Gas Kit (6mm fittings) (Combi Test Gas 99146, Demand Flow Regulator 99118 c/w 6mm tubing)
SC64060Q	Test Gas Kit (1/4 in fittings) (Combi Test Gas 99146, Demand Flow Regulator part no. 99118 c/w 1/4" tubing)



We also offer servicing and calibration maintenance for further details see **page 28**



# Gas Detection - Five Gas and Accessories

## MSA ALTAIR 5X

The ALTAIR 5X Gas Detector is capable of measuring up to 6 gases simultaneously and is now available with integrated PID sensor for VOC detection.

- Weight: 453g
- Fully compatible with MSA Link and Link Pro software and MSA Galaxy GX2 test systems
- Compatible with numerous optional MSA infrared sensors
- Robust pump for improved durability and consistent flow
- Display available in high contrast colour or monochrome
- Advanced VOC detection available as extension
- Large buttons for ease of use
- MotionAlert™ and InstantAlert™ features as standard
- MSA high performance Xcell® sensors
- Bluetooth enabled
- 24 hour bump checkmark
- End of life indicator
- Extremely durable rubberized housing
- Complete with rechargeable battery pack, charging cradle, calibration cap and tubing
- 20 hours of run time



Code	Gas
MSAA-ALT5X-B-L-K-0-1-B-0-E-0-0-B	LEL%, O <sub>2</sub> , H <sub>2</sub> S, CO <sub>2</sub> % Vol
MSA10174737	LEL%, O <sub>2</sub> , NH <sub>3</sub> , CO, H <sub>2</sub> S, PID
MSA10174738	LEL%, O <sub>2</sub> , Cl <sub>2</sub> , CO H <sub>2</sub> S, PID
MSA10174771	LEL%, O <sub>2</sub> , SO <sub>2</sub> , CO H <sub>2</sub> S, PID

## MSA ALTAIR 5X ACCESSORIES

- Altair 5X sampling line 3m probe
- Multifunctional carrying case
- Altair 5X PID sensor cleaning kit
- Altair 5X PID maintenance

Code	Description
MSA10103189	Sampling line 3m probe
MSA10150279	Carry case
MSA10165248	PID sensor cleaning kit
MSA10165247	PID maintenance



## BW GASALERT MICRO 5

Providing protection from up to five potential atmospheric hazards including oxygen, combustible and toxic gases, GasAlert Micro 5 is unparalleled in its versatility, capability and overall value.

- Weight: 370g
- Integral concussion-proof boot
- Water resistant
- Optional integral motorised pump option for remote sampling
- Triple alarms (audible, visual and vibrating)
- Large, user selectable backlit LCD
- Four alarm levels: Low, High, TWA and STEL
- Datalogging models store & recall event info
- Wide range of user selectable field options including password protection, safe and stealth modes.
- Powered by a rechargeable battery pack or alkaline batteries
- Run time of 20 hours



Code	Gas
BWM5-XWSY-R-D-D-Y-E-00	LEL%, O <sub>2</sub> , H <sub>2</sub> S, CO, SO <sub>2</sub> - powered by battery pack
BWM5-XWSY-R-P-D-Y-E-00	LEL%, O <sub>2</sub> , H <sub>2</sub> S, CO, SO <sub>2</sub> - powered by battery pack and including pump
BWM5-XWAY-R-D-D-Y-E-00	LEL%, O <sub>2</sub> , H <sub>2</sub> S, CO, NH <sub>3</sub> - powered by battery pack
BWM5-XWAY-R-P-D-Y-E-00	LEL%, O <sub>2</sub> , H <sub>2</sub> S, CO, NH <sub>3</sub> - powered by battery pack and including pump
BWM5-XWCY-R-D-D-Y-E-00	LEL%, O <sub>2</sub> , H <sub>2</sub> S, CO, Cl <sub>2</sub> - powered by battery pack
BWM5-XWCY-R-P-D-Y-E-00	LEL%, O <sub>2</sub> , H <sub>2</sub> S, CO, Cl <sub>2</sub> - powered by battery pack and including pump
BWM5PID-XWQY-A-P-D-Y-E-00	VOC, LEL%, O <sub>2</sub> , H <sub>2</sub> S, CO - powered by alkaline batteries and including pump
BWM5PID-XWQY-R-P-D-Y-E-01	VOC, LEL%, O <sub>2</sub> , H <sub>2</sub> S, CO - powered by battery pack and including pump
BWM5IR-XWBY-R-D-D-Y-E-00	CO <sub>2</sub> (IR), LEL%, O <sub>2</sub> , H <sub>2</sub> S, CO - powered by battery pack
BWM5IR-XWBY-R-P-D-Y-E-01	CO <sub>2</sub> (IR), LEL%, O <sub>2</sub> , H <sub>2</sub> S, CO - powered by battery pack and including pump

# Gas Detection - Five Gas and Accessories

## BW GASALERT MICRO 5 ACCESSORIES

- Confined space kit - including filters fleet manager software, probe, carry holster, filter kit, calibration cap with 1ft of hose, 0.5 LPM regulator and carry case with foam inserts
- Carry case with foam inserts
- Concussion proof boot
- Carry harness
- Chest harness
- Integral motorised pump kit
- Aspirator kit with probe



Code	Description
BWM5-CK-DL	Confined space kit
BWM5-CK-CC	Carry case
BWGA-BM5-1	Concussion proof boot
BWGA-HM5	Carry harness
BWGA-CH-2	Chest harness
BWM5-PUMP	Integral motorised pump kit
BWGA-AS02	Aspirator kit with probe

## CROWCON GAS-PRO 5

Gas-Pro gives the flexibility to detect up to 5 gases with a wide range of toxic and flammable gas types to choose from, in a compact, rugged IP65 & IP67 device capable of withstanding harsh industrial environments and everyday use.



- Weight: 333g
- Supplied with multi region power lead
- Top mount display - makes it easy to read at a glance
- Simple single button operation - reduces training time
- Intuitive functionality - can be used whilst wearing gloves
- Pumped and diffusion solutions
- Automatic fail-safe flow plate recognition - takes away the pain of pre-entry testing
- Specific and unique Pre-Entry Check (PEC) mode
- Water and dust resistant to IP65 and IP67 - capable of withstanding harsh environments
- Bump and calibration reminders - Full compliance
- Reliable lithium-ion battery - provides over 14 hr use from a 7.5 hr charge

Code	Gas
CRGPZU1ABC-DADBAAFDOB	5Gas O <sub>2</sub> , H <sub>2</sub> S, CO, CH <sub>4</sub> , NH <sub>3</sub>
CRGPZU1ABC-DADBAQFDOB	5Gas CO, H <sub>2</sub> S, CO, CH <sub>4</sub> , SO <sub>2</sub> - cradle charger included
CRGPF-0015-EA-C	5Gas CO, H <sub>2</sub> S, O <sub>2</sub> , CH <sub>4</sub> , CO <sub>2</sub> - multi region cradle charger included
CRGPP-0015-EA-C	5Gas CO, H <sub>2</sub> S, O <sub>2</sub> , CH <sub>4</sub> , CO <sub>2</sub> - multi region cradle charger, pump and flow plate included
CRGPF-0003-EA-A	5Gas CO, H <sub>2</sub> S, O <sub>2</sub> , LEL IR, CH <sub>4</sub> PID
CRGPP-0003-EA-A	5Gas CO, H <sub>2</sub> S, O <sub>2</sub> , LEL IR, CH <sub>4</sub> PID - pump and flow plate included

## CROWCON GASPRO 5 ACCESSORIES

- Pumped flow plate
- Non-pumped flow plate
- Water trap
- Aspirator bulb
- Chest harness plate
- Chest harness straps
- Single straps
- Drop line
- Ball float probe
- Confined space kit - hard shell case with foam inserts, cylinder, power and comms cable, drop line, flow plate, filters, harness and straps
- Hard shell case.



Code	Description
CRAC0100	Pumped flow plate
CRAC0101	Non-pumped flow plate
CRAC0502	Water trap
CRAC0504	Aspirator bulb
CRAC0506	Chest harness plate
CRAC0507	Chest harness straps
CRAC0509	Drop line
CRAC0512	Ball float probe
CRAC0600	Confined space kit
CRAC0610	Hard shell case



# Gas Detection - Area Monitors

## CROWCON DETECTIVE+

Designed for group protection, area monitoring and providing a virtual fenceline, Detective+ is a rugged, interconnectable, multigas temporary area monitor.

- Weight: 7.5kg
- Infrared sensors available - allows sampling of highly flammable gas levels and carbon dioxide. They are also unaffected by poisoning
- Either fixed or folding legs and a protective frame that allows stacking for easier storage
- Built-in pump option - provides fast response and extra sensor protection, and sampling versatility
- IP65 specifications - provides excellent sensor protection
- 25 Detective+ units may be linked together, up to 100m from adjacent units - all linked Detective+ units indicate an alarm sensed by any one unit
- Units sending an alarm flash faster - provides effective warning of gas hazards
- Audible and visual confidence blip
- Vivid red LED clusters for visual alarm
- Multiple beacons - ensures 360° visibility
- Detective Wireless is a wireless module that gives you up to 100 meters range
- Available with an optional internal pump for sampling versatility

Code	Description
CRDSU-01-XX-R	Crowcon Detective+



## BM25 & BM25 WIRELESS

The BM25 portable area gas monitor is designed for team protection or area surveillance where fixed detection systems are not suitable.

- Weight: 6.8kg
- Available with wireless communication up to 0.6 line of sight
- Can check up to 5 gases simultaneously
- Flashing ultra-bright signal
- 170 hours run time
- Resilient to the harshest of environments
- Easily transported when needed
- Works on 16 independent networks
- 30 devices per network

Code	Description
SC6514842-L0001	BM25 wireless with pump
SC651489-L12301	BM25 wireless
SC651482-L12300	BM25 wired



# Service and Calibrations

At Reece, we also offer a comprehensive gas detector calibration and repairs service. This service is available to customers who bought their gas detectors from Reece as well as those who haven't.

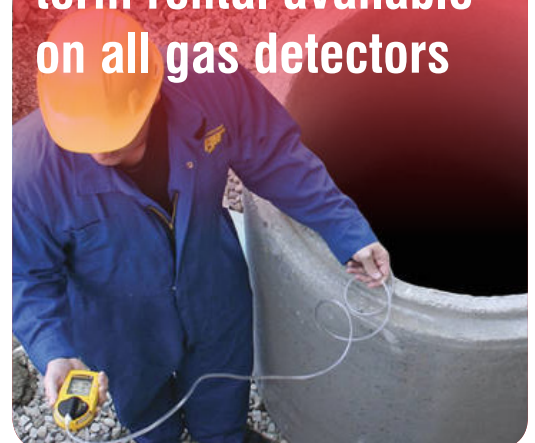
What we offer;

- Free next day courier collection and delivery service
- Calibration certification on completion
- Engraved dog tag detailing; date of calibration, due date, serial number, order number and calibration identification code.

All your calibration data will be entered into our database and when your gas detector is due to be calibrated again we will contact you in advance and help you with your compliance administration.

For any further information contact our sales team on +44(0)1422 310456 or [confinedspace@reecesafety.co.uk](mailto:confinedspace@reecesafety.co.uk)

Call us now for details on our long and short term rental available on all gas detectors



# Breathing Apparatus

As per the Respiratory protective equipment at work;

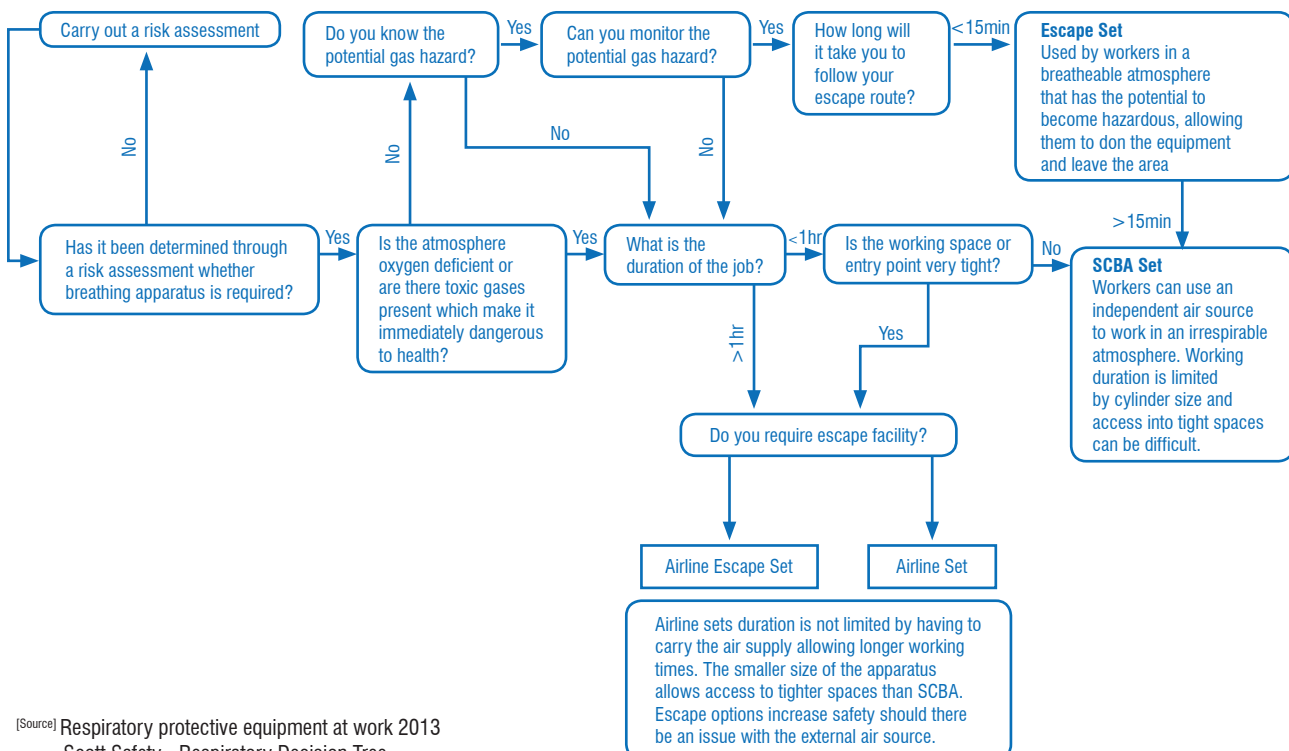
*“The laws governing the control of harmful substances in the workplace, and their supporting ACOP, say that you should only use RPE after you have taken all other reasonably practicable measures to prevent or control exposure. By going through the risk assessment process required by these laws, you can determine whether the use of RPE is necessary in your workplace.”*

*“You should only select and use RPE:*

- *where an inhalation exposure risk remains after you have put in place other reasonable controls (residual risk);*
- *while you are putting in place other control measures (interim measures);*
- *for emergency work or temporary failure of controls where other means of control are not reasonably practicable;*
- *for short-term or infrequent exposure, such as during maintenance work, where you decide that other controls at the source of the exposure are not reasonably practicable.”*



## Respiratory Decision Tree



[Source] Respiratory protective equipment at work 2013  
Scott Safety - Respiratory Decision Tree

## Self Contained Breathing Apparatus - SCBA

### SIGMA-2 KIT WITH VISION 3 FACEMASK AND CYLINDER



The Scott Sigma-2 Type 2 Self Contained Breathing Apparatus combines the highest level of respiratory protection in a simple to operate, cost effective piece of equipment that meets the needs of industrial and marine firefighters.

- Vision 3 facemask
- Lung Demand Valve (LDV)
- 6.0L 300bar Steel Cylinder (41mins)
- Proven high performance pneumatic system
- Compact first breath activated demand valve with bypass
- Ergonomically designed lightweight backplate and type 2 harness
- Kevlar blend flame retardant webbing with kevlar cylinder band
- Corrosion resistant Nickel plated components
- Simple operation for users
- All components are user serviceable, low cost and easy to maintain
- Will accept wide range of 200 and 300 bar cylinders
- Approved to the MED as a Type 2 set



Code	Description
SCBA-SIG2-KIT	Scott Sigma-2 kit with Vision 3 facemask
SCCYL-1200	6ltr 200bar steel cylinder
SCCYL-FWC-1800	9ltr 207bar carbon fibre cylinder
SCCYL-1640	6ltr 300bar steel cylinder
SCCYL-FWC-1860	6.8ltr 300bar carbon fibre cylinder



### MODUL AIR KIT

The Scott Modular is a compact, easy to use airline trolley system designed to provide portable clean air in restricted access areas. Versatile and robust, it consists of a lightweight stainless steel hose reel unit and cylinder frame that can be used independently or together. The frame is designed to carry a pair of cylinders and, where required, an additional frame can be vertically stacked to allow connection of up to four cylinders.

The Modular is used in conjunction with the Scott Flite (page 32) and any Scott face mask.



### MODUL AIR SPECIFICATIONS

	2 cylinders/max 2 users	2 cylinders/max 4 users
FRAME TROLLEY	M-FRM-2-2	M-FRM-2-4
	M-FRM-2-2-T	M-FRM-2-4-T
	M-FRM-2-2-T-A-FU	M-FRM-2-4-T-AFU
	M-FRM-2-2-T-AFU-DS4	M-FRM-2-4-T-AFU-DS4
HOSE REEL TROLLEY	M-FRM-2-2-HRT	M-FRM-2-4-HRT
	M-FRM-2-2-HRT-AFU	M-FRM-2-4-HRT-AFU
	M-FRM-2-2-HRT-AFU-DS4	M-FRM-2-4-HRT-AFU-DS4
	4 cylinders/max 2 users	4 cylinders/max 4 users
FRAME TROLLEY	M-FRM-4-2	M-FRM-4-4
	M-FRM-4-2-T	M-FRM-4-4-T
	M-FRM-4-2-T-A-FU	M-FRM-4-4-T-AFU
	M-FRM-4-2-T-AFU-DS4	M-FRM-4-4-T-AFU-DS4
HOSE REEL TROLLEY	M-FRM-4-2-HRT	M-FRM-4-4-HRT
	M-FRM-4-2-HRT-AFU	M-FRM-4-4-HRT-AFU
	M-FRM-4-2-HRT-AFU-DS4	M-FRM-4-4-HRT-AFU-DS4

### CONTOUR 100 KIT WITH VISION 3 FACEMASK AND CYLINDER



The Contour 100 is a lightweight high performance set.

- Vision 3 facemask
- Lung Demand Valve (LDV)
- Kevlar blend non padded webbing harness
- Ergonomically designed, strong and lightweight injection moulded backplate
- Complies with EN137 & EN139



Code	Description
SCBA-CON100-KIT	Scott Contour 100 kit with Vision 3 facemask
SCCYL-1640	6ltr 300bar steel cylinder
SCCYL-FWC-1860	6.8ltr 300bar carbon fibre cylinder

## CAN'T FIND IT ... CONTACT US

+44 (0)1422 310456  
 email [sales@reecesafety.co.uk](mailto:sales@reecesafety.co.uk)  
[www.reecesafety.co.uk](http://www.reecesafety.co.uk)



## SCBA & Emergency Escape Breathing Apparatus - EEBA

### CEN-PAQ JACKET AND PNEUMATICS AND CYLINDER



Designed for ease of donning, the Cen-Paq range is used where speed of response is the key issue.

- Proven, effective pneumatic system with first breath mechanism for use with Promask or Vision 3 facemasks
- Available in Anti-Static Material
- Available in durations of 15, 20 and 30 minutes
- Airline option available with CEN, Foster and Hansen type couplings



Code	Description
SCBA-CEN-KIT	Cen-Paq Jacket and Pneumatics (no mask)
SCCYL-600	Scott CYL-600 3ltr 200 steel cylinder
SCCYL-820	Scott CYL-820 3ltr 300 steel cylinder
SCCYL-1200	Scott CYL-1200 6ltr 200bar steel cylinder

### ACS-I KIT WITH VISION 3 FACEMASK AND CYLINDER



The type 1 approved ACS-i builds upon the successes of the Contour SCBA range, combining comfort and performance with low through-life costs.

- Vision 3 facemask
- Lung Demand Valve (LDV)
- 6.0L 300bar Steel Cylinder (41mins)
- Approved to EN137:2006 Class I Extremely lightweight backplate
- Proven Tempest Demand Valve
- Removable high performance pneumatics
- Machine washable for easy decontamination



- Easy upgrade path

Code	Description
SCBA-ACS-KIT	Scott ACS-i kit with Vision 3 facemask
SCCYL-1640	6ltr 300bar steel cylinder
SCCYL-1640	6ltr 300bar steel cylinder (right angled valve)
SCCYL-FWC-1860	6.8ltr 300bar carbon fibre cylinder
SCCYL-FWC-1860	6.8ltr 300bar carbon fibre cylinder (right angled valve)

### AIRGO PRO KIT WITH G1 FACEMASK AND CYLINDER



The AirGo Pro SCBA is specifically designed for emergency response and escape and is equipped with the AutoMaXX – the class leading lung-governed demand valve.

- G1 Facemask
- Backplate & AutoMaXX lung-governed demand valve
- 6.0L steel cylinder
- Modular SCBA system
- Completely customisable configuration
- The lung governed demand valve is fixed to the medium pressure line



Code	Description
SCBA-AIRP-KIT	MSA AirGo Pro kit with G1 facemask
MSAD5103974	Composite cylinder - 2ltr 300 bar
MSAD5103976	Composite cylinder - 6ltr 300 bar
MSAD5103979	Composite cylinder - 6.8ltr 300 bar
MSA10055168	Composite cylinder - 6.9ltr 300 bar
MSA10118149	Composite cylinder - 9ltr 300 bar
MSAD5103984	Steel cylinder - 2ltr 300 bar
MSAD5103985	Steel cylinder - 4ltr 300 bar
MSAD5103986	Steel cylinder - 6ltr 300 bar

### AIRGO COMPACT KIT WITH G1 FACEMASK AND CYLINDER



The AirGo compact SCBA is specifically designed for emergency response and escape

- G1 Facemask
- Backplate & lung demand valve
- 6.0L steel cylinder
- Modular SCBA system
- Completely customisable configuration
- High performance harness
- The lung governed demand valve is fixed to the medium pressure line



Code	Description
SCBA-AIRC-KIT	MSA AirGo compact kit with G1 facemask
MSAD5103974	Composite cylinder - 2ltr 300 bar
MSAD5103976	Composite cylinder - 6ltr 300 bar
MSAD5103979	Composite cylinder - 6.8ltr 300 bar
MSA10055168	Composite cylinder - 6.9ltr 300 bar
MSA10118149	Composite cylinder - 9ltr 300 bar
MSAD5103984	Steel cylinder - 2ltr 300 bar
MSAD5103985	Steel cylinder - 4ltr 300 bar
MSAD5103986	Steel cylinder - 6ltr 300 bar



## EEBAs

### ELSA ESCAPE SET



The world's leading Constant flow escape set the Scott Safety ELSA.

- Unique cuboid hood with elastomeric neck seal for easy donning and excellent visibility
- High visibility or anti-static bag
- Automatic activation – a constant flow of air is provided upon opening the ELSA bag
- 10 (10B) or 15 minute (15B) versions available
- Hood design enables it to be worn by those with beards or glasses



Code	Description
EBA-ELSA10	Scott ELSA Escape Set 10B
EBA-ELSA15	Scott ELSA Escape Set 15B

### ELSA SPRINT SET



The Sabre ELSA Sprint is a positive pressure escape set providing air on demand.

- Available with a facemask or positive pressure hood
- High visibility or anti-static bag
- Tempest demand valve offers excellent flow performance
- 10 and 15 minute versions of sabre sprint are available



Code	Description
EBA-SPRINT10	Scott ELSA Sprint Set 10B
EBA-SPRINT15	Scott ELSA Sprint Set 15B

# Emergency Escape Breathing Apparatus - EEBA

## FLITE ESCAPE SET

The Flite is a positive pressure airline breathing apparatus with the option of a 10, 13 or 15-minute compressed air cylinder supply for escape from the most hazardous environments.



- Adjustable and padded webbing bandolier harness for comfort and safety
- Can be used with any positive pressure facemask in the Sabre range
- Optional hip mounted escape cylinders in a range of durations and materials

Code	Description
EBA-FLITECOV	Scott Flite Escape Set
SCCYL-FLITE-10(COV)	2ltr 200bar cylinder 10 min duration
SCCYL-FLITE-15(COV)	3ltr 200bar cylinder 15 min duration
SCCYL-FLITE-SL(COV)	2ltr 300bar cylinder 15 min duration



## DRAGER SAVER PP10 & PP15

Drager's Saver PP range allows safe, effective and uncomplicated escape from hazardous environments, even if H<sub>2</sub>S is present.



- Up to 15 minutes of air
- Intergrated hose for connection to external air supplies
- Dimensions (H x L x D) - 510 x 260 x 190mm
- Weight:
  - PP10** 4.9kg (soft case)
  - PP15** 5.9kg (soft case)



Code	Description
DR3359746	Drager Saver PP10 Soft Case
DR3359747	Drager Saver PP15 Soft Case

## DRAGER SAVER CF10 & CF15

Drager's Saver CF range allows safe, effective and uncomplicated escape from hazardous environments.



- Up to 15 minutes of air
- Highly visible, even under adverse conditions
- Dimensions (H x L x D) - 510 x 260 x 190mm
- Weight:
  - CF10** 4.2kg (soft case)
  - CF15** 5.2kg (soft case)



Code	Description
DR3359734	Drager Saver CF10 Soft Case
DR3359735	Drager Saver CF15 Soft Case

## PREMAIRE ESCAPE - WITH MASK

PremAire Escape is a positive pressure short duration compressed air emergency escape breathing device (EN 402) that provides the user with its intuitive donning procedure that takes less than 5 seconds, the PremAire Escape enables the wearer to escape without difficulty from a potentially hazardous environment.



- Pressure gauge recessed into valve housing which protects gauge and reduces size and profile
- Convenient and fast refilling of the compressed air cylinder
- No restrictions in compressor filling pressure (200 or 300 bar)
- Available with 2.0L Steel cylinder or 2.0L Composite cylinder for lower weight



Code	Description
EBA-PRE-MASK-COMP	MSA PremAire - Mask with Composite Cylinder
EBA-PRE-MASK-STEEL	MSA PremAire - Mask with Steel Cylinder

## MSA PREMAIRE - HOOD WITH COMPOSITE CYLINDER AND WHISTLE



PremAire Escape is a positive pressure short duration compressed air emergency escape breathing device (EN 402) that provides the user with its intuitive donning procedure that takes less than 5 seconds.

- Pressure gauge recessed into valve housing which protects gauge and reduces size and profile
- Convenient and fast refilling of the compressed air cylinder
- No restrictions in compressor filling pressure (200 or 300 bar)
- 3.0L composite cylinder & whistle



### PREMAIRE MASK-HOOD

- Two independent protection barriers
- High protection factors in sour oil & gas and chemical applications
- Straightforward and easy donning

Code	Description
EBA-PRE-HOOD-COMP	MSA PremAire - Hood with Composite Cylinder & Whistle





# Vertical Entry

Alongside our confined space entry training courses Reece are proud to offer a vast selection of vertical entry kit for your team ensuring safe working conditions.

## In this section you will find:

- Tripods
- Blocks
- Winches
- Harnesses
- Brackets
- Tripod Bags
- Lanyards



### Retrieval system requirements

Equipment that can become tangled or unsuitable for retrieval *must not* be used

Other end of retrieval line must be attached to mechanical device or fixed point outside the space

Each entrant *must* wear a chest or full-body harness, attached to a retrieval line

Non-entry rescue is *required* unless the retrieval equipment would increase the risk of entry

Mechanical device *must* be available to retrieve personnel if the space is more than 5ft deep



[Source] The Confined Space Regulations 1997 - Approved Code of Practice and guidance - Health and Safety Executive  
<https://www.capitalsafety.com/en-us/Pages/confined-space-in-construction-OSHA-rule-update.aspx>

# Tripods and Blocks

## TWO PERSON VERTICAL ENTRY TRIPOD

Tripods are the basis of a confined space entry and rescue system.

- 6 anchor points tested to EN795
- Lightweight aluminium alloy - 19.4kg
- 3 overhead pulleys able to hold up to 11m rope
- 3 fixed eyebolts
- 250kg safe working load
- Dimensions: (H x W) 140-240cm x 110-170cm



Code	Description
ATT3	T3 Tripod

## VERTICAL ENTRY AND RESCUE TRIPOD

RGR1 Rescue Tripod is portable, lightweight and easy to erect on site.

- Anchor points tested to EN795
- Portable and adjustable for ease of use
- 2 additional anchorage points on underside of head for additional systems
- 200kg safe working load
- Dimensions: (h x w) 170-270cm x 100-180cm
- Weight: 17.5kg



Code	Description
RIRGR1	RGR1 Rescue Tripod

## VERTICAL ENTRY TRIPOD

- Tested to EN 795:2012
- Legs automatically lock in the open position for added safety
- Maximum height indicator provides quick and easy identification of the maximum leg extension length
- No need for a separate pulley/bracket assembly, making hoist attachment easier and faster
- Accessories can attach to any leg for faster set up
- Aluminium leg and head design reduces weight
- Telescoping legs (up to 2.45m high) do not tangle when tripod is collapsed



Code	Description
MSA10116521	MSA Workman Tripod



## 15M CABLE LENGTH FALL ARREST RECOVERY BLOCK

- A three way retrieval block fitted with steadying handle.
- Accredited to EN 360:1992, EN 1496 A and B:1996
  - 15m x 5mm (L x D) galvanized cable
  - Double action high tensile steel alloy connectors
  - Fall indicating connector and steadying handle
  - Weight: 11.6kg

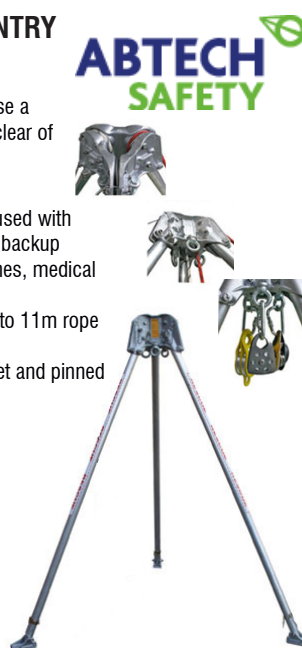


Code	Description
RIRGA4H	RGA4H Fall Arrest Block

## TWO PERSON VERTICAL ENTRY AND RESCUE TRIPOD

The RT3 offers rescuers the ability to use a stretcher vertically lifting the casualty clear of the entrance.

- 6 anchor points tested to EN795
- Extra swivel anchor points can be used with pulleys for double roped rescuer, a backup system, airlines, communication lines, medical kits or tools
- 3 overhead pulleys able to hold up to 11m rope
- 3 swivel eyebolts
- Lanyards can be attached to the feet and pinned to the floor.
- 250kg safe working load
- Dimensions: (H x W) 200-260cm x 130-200cm
- Weight: 21.5kg



Code	Description
ATRT3	RT3 Tripod

## VERTICAL ENTRY TRIPOD

Adjustable aluminium tripod.

- EN795 Class B tested
- Adjustable legs individually lock into place for ease of use and storage
- 2 eye bolts in tripod head
- 200kg safe working load
- Dimensions: (H x diameter) 143.8-241.3cm x 96.5-156cm
- Weight: 19kg

Code	Description
IGDBA2	DBA2 Rescue Tripod



## 15M CABLE LENGTH FALL ARREST RECOVERY BLOCK

This 15m Fall Arrest Recovery Device is designed to provide protection against falls from height.

- Can be used with Abtech tripods and Davit arms
- 15m x 5mm (L x D) galvanized steel cable
- Retracting line
- Brake engages in a controlled deceleration in a fall
- Topman will be able to manoeuvre device in event of a fall
- Swivel anchor eye
- 150kg recommended user weight
- Weight: 10.4kg



Code	Description
ATAB15RT	BRT Torq Fall Arrest Recovery Device

## Blocks and Winches

### FALL ARREST RECOVERY BLOCK SERIES

Fall arrest block with built in two-way rescue/recovery mechanism

- EN360 accredited
- Galvanised steel cable
- Aluminium housing
- Release pin and two-way handle
- Connection handle can be fitted to davit or tripod
- Weight range from: 8.3kg, 11.5kg, 16kg, 18.5kg
- Available in 12m, 18m, 24m and 30m cable lengths
- *Has not been edge tested*



Code	Description
IGHRA12	HRA12
IGHRA18	HRA18
IGHRA24	HRA24
IGHRA30	HRA30

### 15M CABLE LENGTH FALL ARREST RECOVERY BLOCK WITH HANDLE

A three way retrieval block fitted with an updown winch and standard fall arrest capability.

- Accredited to EN 360:1992, EN 1496 A and B:1996
- 15m x 5mm (L x D) galvanized cable
- Double action high tensile steel alloy connectors
- Fall indicating connector
- Weight: 11.4kg



Code	Description
RIRGA4	RGA4 Fall Arrest Block

### MSA WORKMAN WINCH

The rugged MSA Workman Winch has been designed for lifting, lowering, and positioning of personnel and materials. Furthermore it allows for non-entry rescue of a confined space entrant.

- Tripod pin connection fits directly onto the MSA Workman Tripod
- No additional bracket or tools for set-up required
- Level wind mechanism keeps cable evenly spooled on hub
- Built-in clutch and energy absorber
- Double braking system provides secondary protection
- RFID chip allows easy tracking of the device
- Integral, ergonomic carrying grip and unique, foldable handle for simple storage
- Certified to: Machinery Directive 2006/42/EC EN ISO12100:2010, en 1496:2006 Class B



### STAINLESS STEEL

Code	Description
MSA10147566	Workman Winch 10m
MSA10147567	Workman Winch 15m
MSA10147296	Workman Winch 20m
MSA10154687	Workman Winch 25m
MSA10154688	Workman Winch 30m

### GALVANIZED CABLE

Code	Description
MSA10153828	Workman Winch 10m
MSA10153829	Workman Winch 15m
MSA10153830	Workman Winch 20m
MSA10154689	Workman Winch 25m
MSA10154690	Workman Winch 30m

### 50M CABLE LENGTH RESCUE WINCH

RGR7 comes with an up/down clutch locking mechanism with a 50m cable.

- Can be used with the RGR1 tripod
- EN 1496:1996 A&B accredited
- 5mm galvanized steel cable
- Aluminium karabiner accredited to EN 362:2004
- 200kg safe working load
- Dimensions (L x W x D): 21cm x 1340cm x 21cm
- Weight: 21.5kg



Code	Description
RIRGR7	RGR7 Rescue Winch

### 20M CABLE LENGTH LOAD WINCH C/W BRACKETS

Load winch bundle with 20m of 6mm cable

- Fully conformant
- Tripod mounting bracket is included
- 250kg safe working load
- Weight: 10.1kg



Code	Description
IGIKGBTLW	IKGBTLW Load Winch Bundle

# Harnesses

## SINGLE POINT CONFINED SPACE AND RESCUE HARNESS



RGH5 rescue harness is designed for use as a confined access harness.

- EN 361:2002 & EN 1497:2007 accredited
- Made from water repellent polyester and high tensile steel alloy
- Rescue strap with additional D ring
- Features rip stitch indicators
- Front and rear attachment points
- Quick release buckles can be added
- Available in; Small, Standard, Large and XL



Code	Description
RIRGH5SM	RGH5 Rescue Harness Small
RIRGH5ST	RGH5 Rescue Harness Standard
RIRGH5L	RGH5 Rescue Harness Large
RIRGH5XL	RGH5 Rescue Harness Extra Large

## GLOW IN THE DARK SINGLE POINT CONFINED SPACE AND RESCUE HARNESS



With new reflective yarn woven into webbing, its the first of its kind glow in the dark harness.

- EN 361:2002 & EN 1497:2007 accredited
- Made from water repellent high-vis polyester and high tensile steel alloy
- Fully adjustable
- Rescue strap with additional D ring
- Rip stitch indicators
- Front and rear attachment points
- Available in; Small, Standard, Large and XL



Code	Description
RIRGH5 GLOW	RGH5 Glow Rescue Harness Small
RIRGH5 GLOWST	RGH5 Glow Rescue Harness Standard
RIRGH5 GLOWL	RGH5 Glow Rescue Harness Large
RIRGH5 GLOWXL	RGH5 Glow Rescue Harness Extra Large

## V-FIT SINGLE HARNESS



With distinctive design and extended padding, V-FIT range of full body harnesses provide high-level comfort for users in all applications.

- Fall arrest rated textile loops at the front and a lightweight aluminium back D-ring
- Front loops, shoulder loops and available with either quick-fit buckles or bayonet buckles
- Shoulder and leg padding for comfort
- Dual load indicator
- Bayonet style buckles with locking engagement window
- 140 kg load capacity
- Certified to EN 361:2002 and EN 358:1999 (depending on model)
- Available in S, M/LG and XL



Code	Description
MSA10180195	Small V-Form harness bayonet buckles
MSA10180196	Med/Lg V-Form harness bayonet buckles
MSA10180197	XL V-Form harness bayonet buckles



## TWO POINT CONFINED SPACE AND RESCUE HARNESS



Two point, quick release harness.

- Tested to EN 361 & EN 1497
- Polyester webbing with anti-corrosive steel fittings
- Adjustable leg loops, chest strap and shoulder straps
- Quick connecting buckles on leg loops and chest strap
- Weight: 1.7kg



Code	Description
IGIKG2BR	IKG2BR Fall Arrest Harness

## RESCUE BAR FOR USE WITH MSA V-FORM HARNESS



The MSA Workman Spreader Bar is used in conjunction with the V-Series harnesses for raising and lowering a person during rescue. The attached web loops can be used to secure an incapacitated victim's arms when lifting or lowering.

Certified to EN 354:2010



Code	Description
MSA10115550	MSA Workman Spreader Bar, Steel Snaphook
MSA10115551	MSA Workman Spreader Bar, Aluminium Snaphook

## SINGLE POINT CONFINED SPACE AND RESCUE HARNESS



Single point, quick release harness.

- Tested to; EN 361 & EN 1497
- Polyester webbing with anti-corrosive steel fittings
- Adjustable leg loops, chest strap and shoulder straps
- Quick connecting buckles on leg loops and chest strap
- Weight: 1.35kg



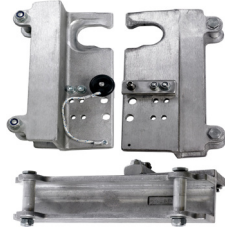
Code	Description
IGIKG1AR	IKG1AR Fall Arrest Harness

## Brackets and Bags

### MOUNTING BRACKET FOR IKAR HRA SERIES TO TRIPOD

Mounting bracket for attaching a HRA onto a rescue tripod.

- Suitable for HRA 12,18, 24 and 30
- Aluminium construction
- Fixing included
- Weight: 1.8kg



Code	Description
IG41-54/9.5-30	IKAR Mounting Bracket

### IKAR PULLEY WHEEL WITH KARABINER

Stainless steel pulley for use with the IKAR range of tripods. Complete with steel screwgate karabiner for connection to tripod eyebolts.

- Made from stainless steel
- Anti corrosive
- Weight: 1.1kg



Code	Description
IG41-Z20	IKAR Pulley Wheel

### MOUNTING BRACKET FOR AB15RT BLOCK TO TRIPOD

This bracket is designed to attach Abtech 15m Fall Arrest Device to the T3 or RT3 round leg tripod.

- Round leg use only
- Suits Abtech AB15RT block
- ALKO clamp



Code	Description
ATT05T	Torq Bracket

### MOUNTING BRACKET FOR RGA4 BLOCK TO TRIPOD

This bracket has been specifically designed to use with the RGR1 tripod to safely attach the very popular RGA4 Fall arrest/retrieval block.

- Steel construction
- Dimensions (H x W x D) - 340 x 90 x 165mm
- Weight: 1.4kg



Code	Description
RIRGA4B	RGA4B Bracket

### HEAVY DUTY STORAGE BAG FOR RGR7 WINCH

Heavy duty bag developed by Ridgegear to give a safe storage for the popular man RGR7 winch.

- Abrasion resistant nylon
- Diagonal zip for ease of use



Code	Description
RIRGK30	RGK30 Bag

### RGR1 TRIPOD BAG

Specifically designed to safely store the RGR1 tripod.

- Full zip and two carry handles wrap the bag for extra strength and support
- Made from abrasion resistant nylon
- Dimensions: (L x W) 140 x 28cm



Code	Description
RIRGK29BAG	RGK29 Tripod Bag

### TRIPOD STORAGE BAG

- Fitted with two webbing carry handles and full length zip
- Dimensions - 1.72m in length
- Weight: 1.62kg



Code	Description
IGIKGBTBBAG	Tripod Storage Bag



Why not check out our training courses for your team?

Ensure your team is fully compliant with confined space entry and rescue plans.

Our call us now to discuss; +44(0)1422 310456

# Lanyards

As per WAHSA technical guidance note no.4;

*“Lanyards should conform to European Standard EN 354:2010 Personal Fall Protection Equipment - Lanyards, which requires an ultimate tensile strength of 22kN for lanyards made from textile material or have textile elements, and 15kN for lanyards made entirely from metallic material including terminations and lanyards fittings.”*

## ELASTICATED WEBBING LANYARD AND SHOCK ABSORBER



A general-purpose lanyard used when the operative is working from a static position connected to a fixed anchor point.

- EN 354:2010 and EN 355:2002 accredited
- Made from 36mm water repellent polyester
- RGK1 and any compatible EN 362 connectors
- Max arrest force - <6kN
- Available lengths -
  - 0.85-1.3m
  - 1.15-1.8m



Code	Description
RIRGL6/1.3	Single Leg Elasticated Webbing Lanyard & Shock Absorber 1.3m
RIRGL6/1.8	Single Leg Elasticated Webbing Lanyard & Shock Absorber 1.8m

## SINGLE LEG ADJUSTABLE RESTRAINT LANYARD



The RGL12 is an adjustable restraint lanyard and acts as a leash for an operative working at height.

- EN 354:2010 accredited
- Made from 26mm water repellent polyester
- Steel adjuster only.
- Max arrest force - <6kN
- Available lengths -

- 0.63-1m
- 0.89-1.5m
- 1.13 -2m



Code	Description
RIRGL12/1	Single Leg Adjustable Restraint Lanyard 1m
RIRGL12/1.5	Single Leg Adjustable Restraint Lanyard 1.5m
RIRGL12/2	Single Leg Adjustable Restraint Lanyard 2m

## TWIN LEG ELASTICATED WEBBING RESTRAINT LANYARD



The RGL26 Twin Leg lanyard is an industry standard for restraint lanyards, and normally the minimum equipment issued with a harness for working at height.

- EN 354:2010 accredited
- Made from 36mm water repellent polyester
- Supplied without connectors
- Do not use for fall arrest
- Available lengths -

- 0.75-1.2m
- 1.05-2m



Code	Description
RIRGL26/1.2	Twin Leg Elasticated Webbing Restraint Lanyard 1.2m
RIRGL26/2.0	Twin Leg Elasticated Webbing Restraint Lanyard 2m

## ADJUSTABLE WEBBING RESTRAINT LANYARD



- Tested to EN 354 & EN 358
- Made from 25mm polyester webbing with plated (anti-corrosive) steel adjuster buckle
- Aluminium double action hooks tested to EN 362
- Available lengths -

- 1.5m
- 2m



Code	Description
IGIK2B150A2	A2 Adjustable Webbing Restraint Lanyard 1.5m
IGIK2B200A2	A2 Adjustable Webbing Restraint Lanyard 2m

## Y13 TWIN LEGGED WEBBING ENERGY ABSORBING LANYARD



- Tested to EN 355 & BS8513
- Made from 25mm polyester webbing
- Features a tear webbing energy absorbing pack
- Steel screw karabiners tested to EN 362 on all ends
- Available lengths -

- 1m
- 1.25m
- 1.5m
- 2m



Code	Description
IGIK13FB100Y13	Twin Legged Webbing Energy Absorbing Lanyard 1m
IGIK13FB125Y13	Twin Legged Webbing Energy Absorbing Lanyard 1.25m
IGIK13FB150Y13	Twin Legged Webbing Energy Absorbing Lanyard 1.5m
IGIK13FB175Y13	Twin Legged Webbing Energy Absorbing Lanyard 1.75m
IGIK13FB200Y13	Twin Legged Webbing Energy Absorbing Lanyard 2m

## A3 ADJUSTABLE WEBBING RESTRAINT LANYARD



- Tested to EN 354 & EN 358
- Made from 25mm polyester webbing with plated (anti-corrosive) steel adjuster buckle
- Aluminium double action hooks tested to EN 362
- Available lengths -

- 1.5m
- 2m



Code	Description
IGIK2B150A3	A3 Adjustable Webbing Restraint Lanyard 1.5m
IGIK2B200A3	A3 Adjustable Webbing Restraint Lanyard 2m

[Source] WAHSA technical guidance note no.4 - 1.0 What are energy absorbing lanyards?

# Lighting, Helmets and Radios

As per the Personal protective equipment (PPE) at work - A brief guide;

*“PPE is equipment that will protect the user against health or safety risks at work. It can include items such as safety helmets and hard hats, gloves, eye protection, high-visibility clothing, safety footwear and safety harnesses.”*

**In this section you will find:**

- **ATEX Lighting**
- **Helmets**
- **ATEX Radios**



## ATEX Area Classification

Equipment Category	Definition	Zone	
		Gases & Vapours	Dusts
Category 1	An area where an explosive atmosphere is present continuously or for long periods (over 1000 hours per year of > 10% of the time)	Zone 0	Zone 20
Category 2	An area where an explosive atmosphere is likely to occur in normal operation (10 - 1000 hours per year or 0.1 to 10% of the time)	Zone 1	Zone 21
Category 3	An area where an explosive atmosphere is not likely to occur in normal operation (under 10 hours per year to 0 to 0.1% of the time)	Zone 2	Zone 22

[Source] Personal protective equipment (PPE) at work - A brief guide

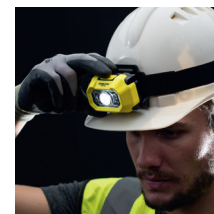
# Lighting

To work safely in confined spaces as per the ACOP -

*“Adequate and suitable lighting, including emergency lighting, should be provided. For example, the lighting should be specially protected if used where flammable or potentially explosive atmospheres are likely to occur. Other gases may be present that could break down thermally on the unprotected hot surfaces of a lighting system and produce other toxic products. Lighting may need to be protected against knocks (eg by a wire cage), and /or be waterproof. The position of lighting may also be important, for example to give ample clearance for work or rescue to be carried out unobstructed.”*

## ATEX ZONE 0 PORTABLE LIGHTING

Our range of lighting is designed and tested to comply with requirements to safely operate in Zone 0 where ignitable concentrations of flammable gases, vapours or liquids are present continuously or for long periods of time under normal operating conditions.



### LED-PL1

- 65 Lumen white CREE LED.
- Durable rubberised head and body.
- Convenient pocket clip.
- Easy press switch ON/OFF operation.
- Safety gas release valve to release hydrogen gases.
- Safety locking battery compartment.
- ATEX Zone 0 compliant.
- Chemical and corrosion resistant.
- Strong ABS housing.



Code	Description
LED-PL1	ATEX Zone 0 65 lumen LED Pen Torch

### LED-H2

- 180 Lumen white CREE LED.
- Adjustable rubberised headbands.
- IP67 Dust and Waterproof.
- 1m Submersible.
- Easy press rubberised switch.
- 90° Rotational head.
- ATEX Zone 0 compliant.
- Safety gas release valve.
- Safety locking battery compartment.
- Durable synthetic industrial rubber impact resistant construction.

Code	Description
LED-H1	ATEX Zone 0 140 lumen LED Head Torch

### LED-RA2

- 210 Lumen white CREE LED.
- ATEX Zone 0 compliant.
- Ultra strength polycarbonate housing.
- Convenient pocket clip.
- Durable rubberised head and grips.
- Safety locking battery compartment.
- Easy push switch Micro Switch Operation.
- Impact resistant to 1m.



Code	Description
LED-RA2	ATEX Zone 0 270 lumen Right Angle Torch



### LED-FL4

- 130 Lumen white CREE LED.
- ATEX Zone 0 compliant, explosion proof.
- Safety gas release valve to release hydrogen gases.
- IP67 dust and 3M submersible.
- Chemical and corrosion resistant.
- Rubberised head for greater durability.
- Industrial strength polycarbonate housing.
- Detachable pocket clip included for hands free use.

Code	Description
LED-FL4	ATEX Zone 0 130 lumen LED compact torch

Regulation 15 of the Electricity at Work Regulations 1989 states;

*“The purpose of the regulation is to ensure that sufficient space, access and adequate illumination are provided while people are working on, at or near electrical equipment so that they may work safely. The requirement is not restricted to those circumstances where live conductors are exposed, but applies where any work is being done in circumstances which may give rise to danger.”*

[Source] The Confined Space Regulations 1997 - Approved Code of Practice and guidance - Health and Safety Executive  
The Electricity at Work Regulations 1989



## Helmets

### EN 397-

*“This European Standard specifies physical and performance requirements, methods of test and marking requirements for industrial safety helmets. The mandatory requirements apply to helmets for general use in industry. Additional optional performance requirements are included to apply only where specifically claimed by the helmet manufacturer. Industrial safety helmets are intended to provide protection to the wearer against falling objects and consequential brain injury and skull fracture.”*

#### VENTILATED SAFETY HELMET

The helmet with innovative designs to maximize comfort. Specially ventilated with 8 air intakes.



- Approved to EN 12492
- External shell - Polypropylene
- Internal shell - HD Polystyrene expanding
- Headband - Soft PA Nylon
- Size - adjustable from 53-63cm
- Weight - 400g
- PPE Category - II
- Available in; white, red and black
- Performances <sup>\*standard requirements</sup>
  - Protection against top impacts - \*5kg from 2m / 100J
  - Protection against side, front and rear impacts - \*5kg from 0.5m / 25J
  - Protection against the penetration of objects - \*3kg from 1m / 30J
  - Chin strap resistance - \* >50kg



Code	Description
KZHWPLW	Zenith PL helmet white
KZHWPLB	Zenith PL helmet black
KZHWPLR	Zenith PL helmet red

#### SAFETY HELMET

The helmet with innovative designs to maximize comfort. It provides the user protection against electric shock and electrical hazards.



- Approved to EN 397
- External shell - Polypropylene
- Internal shell - HD Polystyrene
- Headband - Soft PA Nylon
- Size - adjustable from 53-63cm
- Weight - 400g
- PPE Category - III
- Available in; white and blue
- Performances <sup>\*standard requirements</sup>
  - Protection against top impacts - \*5kg from 2m / 100J
  - Protection against side, front and rear impacts - \*5kg from 0.5m / 25J
  - Protection against the penetration of objects - \*3kg from 1m / 30J
  - Chin strap resistance - \* >15kg <25kg



Code	Description
KZHW	Zenith dielectric helmet white
KZHB	Zenith dielectric helmet blue

#### INDUSTRIAL SAFETY HELMET WITH SLIP RACHET

The helmet combines strong shell for protection with the all the comfort benefits of the Evolution 3D Adjustment harness system.



- Approved to EN 397
- External shell - HDPE
- Sweatband - Egyptian cotton core with porous PU
- Revolution Slip Ratchet
- Unvented meets EV 50365 Class 0 10KV standard
- Available in; white and blue
- Weight - 400g



Code	Description
JPAJE160-000-100	EVO 3 (ratchet slip) white
JPAJE160-000-200	EVO 3 (ratchet slip) yellow
JPAJE160-000-300	EVO 3 (ratchet slip) blue

#### INDUSTRIAL SAFETY HELMET WITH WHEEL RACHET

The helmet combines strong shell for protection with the all the comfort benefits of the Evolution 3D Adjustment harness system.



- Approved to EN 397
- External shell - HDPE
- Sweatband - Egyptian cotton core with porous PU
- Revolution Wheel Ratchet
- Unvented meets EV 50365 Class 0 10KV standard
- Available in; white and blue



Code	Description
JPAJE170-000-100	EVO 3 helmet (wheel slip) white
JPAJE170-000-500	EVO 3 helmet (wheel slip) blue



[Source] BS EN 397:2012+A1:2012

# Helmets

## VENTILATED RESCUE HELMET

Comfortable ventilated helmet for work at height and rescue.

- Approved to EN 397 and EN 12492
- Materials - ABS, nylon, polycarbonate, high-strength polyester and polythene
- Shock absorption achieved through deformation of the outer shell
- Strong chinstrap (>50 daN) limits the risk of losing the helmet during a fall
- Weight: 455g



Code	Description
PHA10VWA	Vertex vent helmet white
PHA10VYA	Vertex vent helmet yellow
PHA10VBA	Vertex vent helmet blue



**STILL NOT SURE? CALL US**

**01422 310456**

email [confinedspace@reecesafety.co.uk](mailto:confinedspace@reecesafety.co.uk)

[www.reecesafety.co.uk](http://www.reecesafety.co.uk)

# Radios

To work safely in confined spaces as per the ACOP -

*“An adequate communication system must be in place and could enable communication:*

- between those inside the confined space;*
- between those inside the confined space and those outside; and*
- to summon help in case of emergency”*

## MOTOROLA DP4401 & DP4801 ATEX RADIO

Motorola DP4000 Ex series meets the most strongest standards and has the highest ATEX rating.

- Available with display or non display
- Intelligent audio and transmit interrupt
- IP67 rated
- DP4801 has a full keypad and large colour display
- Ability to text and caller ID (DP4801 only)
- Dimensions (w x h x l) - 56.7 x 138.5 x 39.8mm
- Weight including Li-Ion battery:
  - DD4401 - 455.5g
  - DD4801 - 482.5g



Code	Description
DP4801	Motorola ATEX UHF radio c/w Li-Ion Batt, belt clip & antenna - display
DP4401	Motorola ATEX UHF radio c/w Li-Ion Batt, belt clip & antenna - non display
DP4801IND	Motorola Single charger
DP48016WAY	Motorola Impress series 6-way charger

## IC-F51 ATEX & IC-F61 ATEX RADIO

Icom's IC-F51/F61 gives you a compact waterproof, MIL STD package thats easy to use.

- Built in, multiple 5-tone signaling
- Up to 7 programmable buttons
- Alphanumeric display
- Dimensions (w x h x d) - 56 x 97 x 36.4mm
- Weight: 290g approx



Code	Description
IC-F51	Icom IC-F51 ATEX Radio
IC-F61	Icom IC-F61 ATEX Radio
ICBC-147SV+BC-152	Battery charger
ICBC-145SV+BC-119N+AD-100	Rapid charger

Many customers are being designated as needing ATEX dust and gas complaint radio equipment and we have a robust range of radios to suit this high explosive environment and associated non-ATEX area base stations, repeaters and antennae.



[Source] The Confined Space Regulations 1997 - Approved Code of Practice and guidance - Health and Safety Executive

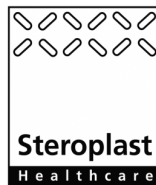
# Emergency Rescue Medical Equipment

As per the ACOP 2014;

*“Regulation 5 requires that no one should enter or work in a confined space unless there are emergency arrangements in place that are appropriate for the level of risk involved in the task/space. These should include making provision for extracting workers from the confined space and making provision for first-aid equipment (including resuscitation equipment) where the need can be foreseen.”*

*“To be suitable and sufficient the arrangements for rescue and resuscitation should cover:*

- a) rescue and resuscitation equipment;
- b) raising the alarm and rescue;
- c) safeguarding the rescuers;
- d) fire safety;
- e) control of plant;
- f) first aid;
- g) public emergency services;
- h) training”



We offer a range of rescue team options, head to **page 6** to see how Reece Safety can ensure you stay compliant and most importantly, *safe* whilst working in confined spaces.



[Source] The Confined Space Regulations 1997 - Approved Code of Practice and guidance - Health and Safety Executive

## Stretchers

For emergency rescue in confined spaces, according to ACOP 2014;

*“You should assess the requirements for emergency rescue arrangements. Possible emergencies should be anticipated and appropriate rescue arrangements made. The likely risks, and therefore the equipment and measures needed for a rescue by nearby employees, must be identified and the equipment made available for use.”*

### COMPACT LIGHTWEIGHT STRETCHER KIT

A robust, compact and lightweight stretcher. The flexible material combined to a smooth finish allows easy sliding and permits the stretcher to be rolled.

- No webbing under the stretcher preventing damage whilst dragging
- Strong handles around the stretcher
- Stretcher may be horizontally or vertically hauled
- Closure straps secure and allow the stretcher to mould around the casualty
- Can be used with the Abtech Two Person Tripod for confined space rescue
- Max user weight: 400KG
- Dimensions – 2300 x 915mm (L x W)

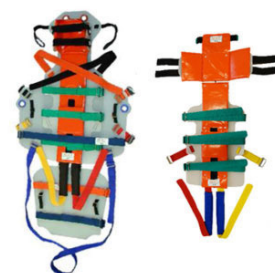


Code	Description
ATSLIX100KIT	Slix 100 Kit

### COMPACT ARMS-OUT STRETCHER

An arm's out stretcher for extrication of casualties through very small openings. This stretcher was designed to overcome a severe extraction problem.

- 4 x 400k rated haul and security line attachment points and crutch straps
- Capacity of a semi-horizontal haul
- Optional skirt included, which wraps around upper legs giving extra support and protection
- Flexible skin allows a degree of bending, perfect for tight places



Code	Description
ATSLIX50COM	Slix 50 Kit

### COMPACT LIGHTWEIGHT “OBESE” STRETCHER

A robust, compact and lightweight stretcher for the evacuations of clinically obese persons.

- No webbing under the stretcher preventing damage whilst dragging
- Strong handles around the stretcher
- May be horizontally or vertically hauled
- Closure straps secure and allow the stretcher to mould around the casualty
- Can be used with the Abtech Two Person Tripod for confined space rescue.
- Max user weight: 400KG
- Dimensions – 2440 x 1220mm (L x W)
- Extensions are provided to widen the stretcher when required, dimensions 200mm each



Code	Description
ATSLIX100XL	Slix 100XL Kit



### EMERGENCY SPINAL BOARD

- Lightweight and smooth tapered backboard
- Durable and easily cleaned
- Can be used with straps or speed clips
- X-ray translucent
- Head immobiliser compatible
- Max weight: 158kg
- Dimensions: 1828 x 457 x 51mm (L x W x H)
- Weight: 5kg



Code	Description
SPWSTE0003	Emergency Spinal Board

### SPIDER STRAP - BODY RESTRAINING STRAP SYSTEM

A complete system to immobilise a patient on a spinal board.

- Material: Polypropylene
- Machine Washable
- Multicoloured



Code	Description
SPWSTE0075	Spider Strap System



[Source] The Confined Space Regulations 1997 - Approved Code of Practice and guidance - Health and Safety Executive

# Stretcher Accessories and Trauma Kits

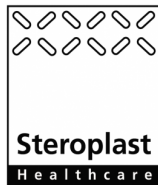
According to ACOP 2014;

*“Rescue equipment will often include lifelines and lifting equipment (since even a strong person is unlikely to be able to lift or handle an unconscious person on their own using only a rope), additional sets of breathing apparatus and first-aid equipment, including automatic external defibrillators (AEDs) and other resuscitation equipment.”*

## EMERGENCY RESPONSE TRAUMA BAG

The ideal bag and kit for first response trauma.

- Bright red bag with reflector strips for instant detection in an emergency
- Handles at top and side for ease of transfer
- 58 piece kit ensures a large amount of individuals can be treated at the scene
- Refills can be bought seperately

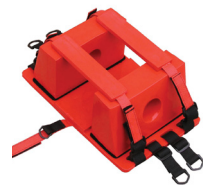


Code	Description
SP8250	Emergency Response Trauma Kit
SP8250P	Emergency Repsonse Trauma Bag Refill

## HEAD IMMOBILISER FOR STRETCHER

A complete system to immobilise a patient on a spinal board.

- Unit includes;
  - Universal base
  - 2 head support block
  - Pair of head/chin straps
- Made from non absorbent material
- Design allows it to be used with most scoops and spinal boards
- 100% X-ray translucent
- Compatible with most extrication collars
- Hi-Vis colour



Code	Description
SP1339	Head Immobiliser



According to ACOP 2014;

*“Those likely to be involved in any emergency rescue should be trained for that purpose. The training needs for each individual will vary according to their designated role. Refresher training should be organised and available on a regular basis, for example annually. Training should, where appropriate, include the following;*

- a) the likely causes of an emergency*
- b) use of rescue equipment, eg breathing apparatus, lifelines and where necessary a knowledge of its construction and working;*
- c) the check procedures to be followed when donning and using apparatus;*
- d) checking of correct functioning and/or testing of emergency equipment (for immediate use and to enable specific periodic maintenance checks);*
- f) works, site or other local emergency procedures including the initiation of an emergency response;*
- g) instruction on how to shut down relevant process plant as appropriate (this knowledge would be required by anyone likely to perform a rescue);*

- h) resuscitation procedures and, where appropriate, the correct use of relevant ancillary equipment and any resuscitation equipment provided (if intended to be operated by those receiving emergency rescue training);*
- i) emergency first aid and the use of the first-aid equipment provided;*
- j) use of firefighting equipment;*
- k) liaison with local emergency services in the event of an incident, providing relevant information about conditions and risks, and providing appropriate space and facilities to enable the emergency services to carry out their tasks; and*
- l) rescue techniques including regular and periodic rehearsals/exercises. This could include the use of a full-weight dummy. Training should be realistic and not just drill based, and should relate to practice and familiarity with equipment.*

(Source) The Confined Space Regulations 1997 - Approved Code of Practice and guidance - Health and Safety Executive

# Defibrillators

## POWERHEART G5 FULLY AUTOMATIC AED

The Powerheart® G5 is the first AED to combine fully automatic shock delivery, dual-language functionality, variable escalating energy, and fast shock times to help save an SCA victim's life.

- Ability to deliver shock after end of CPR in 10 seconds or less
- Includes pacemaker pulse detection
- Automatic self tests
- Voice prompt alerts
- 8 year defibrillator guarantee
- 4 year full battery guarantee
- Drop tested to withstand a 1.22m drop
- Dimensions: 90 x 230 x 300mm (H x W x D)
- Weight: 2.6kg (including battery and pads)



Code	Description
CSG5A-02A	Powerheart G5 Fully Auto AED

## POWERHEART G5 FULLY AUTOMATIC WITH INTELLISENSE CPR

The Powerheart® G5 is the first AED to combine fully automatic shock delivery, dual-language functionality, variable escalating energy, and fast shock times to help save an SCA victim's life. With the Intellisense™ CPR device, users can combine compression rate and depth corrections based on 2015 AHA and ERC CPR Guidelines, quickly and easily.

- Ability to deliver shock after end of CPR in 10 seconds or less
- Includes pacemaker pulse detection
- Automatic self tests
- Voice prompt alerts
- 8 year defibrillator guarantee
- 4 year full battery guarantee
- Drop tested to withstand a 1.22m drop
- Dimensions: 90 x 230 x 300mm (H x W x D)
- Weight: 2.6kg (including battery and pads)



Code	Description
CSG5A-02C	Powerheart G5 Fully Auto with CPR

## POWERHEART G5 CARRY CASE

- Semi rigid material providing additional protection for the Powerheart G5 AED
- Adjustable shoulder strap
- Extra storage for any additional pads ensuring they are clearly visible at all times



Code	Description
CSXCAED002A	Powerheart G5 Carry Case

## Why defibrillators save lives;

Every minute without CPR and defibrillation reduces a victims survival rate by 7 to 10 percent.

Without immediate treatment, 90-95 percent of cardiac arrests prove fatal.

CPR must be learnt, but today's defibrillators are all easy-to-use models that walk its user through the whole process and clearly communicate what to do.

If a defibrillator is used within 3-5 minutes of cardiac arrest, survival rates jump from 6 percent to 74 percent.

[Source] <https://firstaidforlife.org.uk/why-defibillaors-save-lives/>



Our Level 3 First Aid course details are on page 13

# Confined Space Covers and Barriers/Signage

In the Workplace (Health, safety and welfare) Regulations 1992;

*“Access should be limited to specified people and others kept out, for example by barriers; in high-risk situations adopt suitable formal written permit-to-work systems. A safe system of work should be operated which may include the provision of a personal fall-protection system. Give adequate information, instruction, training and supervision.”*

Having the right signs in a workplace is vital to keep your workforce safe. Our range caters for all applications, no matter what the conditions. Regarding signs in the workplace according to ACOP 2014;

*“An appropriate, clear and conspicuous safety sign that prohibits unauthorised entry should be placed alongside openings that allow for safe access.”*



Rubbermaid Commercial Products is a manufacturer of innovative, solution-based products for commercial and institutional markets worldwide.

Since 1968, RCP has pioneered technologies and system solutions in the categories of food services, sanitay maintenance, waste handling, material transport, away-from-home washroom and safety products.

RCP, an ISO 9001:2000 manufacturer, is part of Newell Brands's global portfolio of brands and continues to develop innovative products.



JSP are Europe's leading independent manufacturer of "above the neck" Personal Protective Equipment including a new range of Height Safety equipment.

The company is strongly committed to innovation and is backed by an in-house research & development team with manufacturing and testing bases.

JSP exports to over 100 countries with an estimated 40 million people worldwide using JSP products daily to protect themselves.

[Source] The Confined Space Regulations 1997 - Approved Code of Practice and guidance - Health and Safety Executive  
Health and Safety Executive Workplace (Health, Safety and Welfare) Regulations 1992  
<http://rubbermaid.eu/about/profile>  
<http://www.jsp.co.uk/link/en/faq/e/>

# Confined Space Covers, Tags and Barrier Tape

## CONFINED SPACE COVERS

- Easy-to-use, lockable cover slips over flange of confined space access points for quick application to prevent unauthorised entry.
- Made from durable materials to withstand extreme environments and available as Ventilated or Solid.
- Available in four sizes, S to XL, to fit standard man-way diameters from 508mm – 991mm (20in to 39in).
- Once a confined space entryway has been opened, covers provide required signage needed to alert workers of confined space danger.
- During long periods between entry operations, lockable covers provide added security and shield against contamination of the space.
- Weatherproof lock should be used.



RCSS203CS SOLID

Code	Description	Man-Way opening
RCSS203CSS	Lockable, SOLID Confined Space Cover	508mm - 584mm
RCSS203CSM	Lockable, SOLID Confined Space Cover	584mm - 711mm
RCSS203CSL	Lockable, SOLID Confined Space Cover	711mm - 813mm
RCSS203CSXL	Lockable, SOLID Confined Space Cover	813mm - 991mm



RCSS202CS VENTILATED

Code	Description	Man-Way opening
RCSS202CSS	Lockable, VENTILATED Confined Space Cover	508mm - 584mm
RCSS202CSM	Lockable, VENTILATED Confined Space Cover	584mm - 711mm
RCSS202CSXL	Lockable, VENTILATED Confined Space Cover	813mm - 991mm



## CONFINED SPACE TAGGING

A complete confined space status tagging system to help prevent accidents and efficiently manage inspection procedures. It uses a unique holder and insert system to ensure the latest status is instantly visible at the point of use. The holder provides multiple attachment options such as cable tie, adhesive, screw or rivet. Entrytag (Pack of 10) Size: 260 x 153mm. Holder Size: 193 x 144mm (Insert).

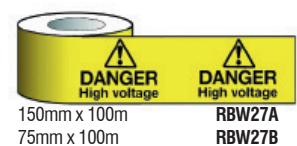
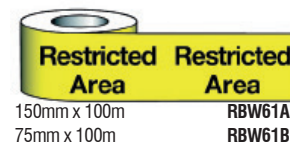
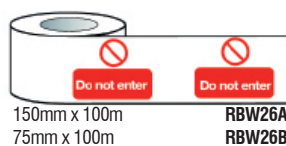
Code	Description
SCAF51	Entrytag® kit (Pack of 10 tags plus holder)
SCAF52	Entrytag® holders (Box of 10 Entrytag® Holders & 1 permanent pen)
SCAF53	Entrytag® magnetic holders (Box of 10)
SCAF54	Entrytag® Standard Confined Space Inspection Insert (Single insert)
SCAF55	Entrytag® Man in Confined Space Inserts (Single insert)
SCAF56	Entrytag® Man in Tank Inserts (Single insert)



## BARRIER WARNING TAPES

Display your safety message on highly visible tape.

- Made from non-adhesive polyethylene.
- Strong and highly visible.
- Ideal for warning of danger and cordoning off potential hazards.
- Supplied in roll form.
- Sizes: 75mm x 100m & 150mm x 100m.





## Signage and Barriers



Made from durable 1mm PVC (AR) or flexible self-adhesive vinyl (AS).



RWCS61AR\* 210 x 148mm  
RWCS61AS\* 297 x 210mm

\*Rigid Only



**Danger**  
Confined space



No unauthorised entry



Permit to work must be obtained

RWCS64AR 600 x 600mm  
RWCS64AS 600 x 600mm



**Danger**  
Confined space



Entry by permit only

RWCS65AR 150 x 300mm  
RWCS65AS 150 x 300mm  
RWCS66AR 300 x 500mm  
RWCS66AS 300 x 500mm



**Danger**  
Hazard area

RWCS60AR  
RWCS60AS



**Do not enter**

300 x 500mm  
300 x 500mm



**Danger**  
Confined space

RWCS63AR  
RWCS63AS



No unauthorised access

300 x 500mm  
300 x 500mm



**Keep locked**



**Hazardous area**

RWCS67AR  
RWCS67AS



No admittance Authorised personnel only

300 x 500mm  
300 x 500mm

### TITAN SAFETY BARRIER FENCING

Stackable road barrier, extremely easy to assemble and use

- Sturdy one-piece injection moulded construction is robust and rugged for the demands of everyday use
- Central struts throughout the centre areas provide extra stability and prevent access to the work zone
- Struts also contain integral moulded finger grips for easy movement
- Fully reflective top panel meets BS873
- 2m length



Code	Description
JPKBP073-300-600	2m Barrier

### BARRICADDY MOBILE BARRIER SYSTEM

Create a 4m long highly visible barrier in seconds

- Flexible and lightweight.
- 16 articulating panels can be set straight or curved.
- Two non-marking wheels enable quick and easy deployment.
- Easily locked together for compact storage.
- Dimensions closed (H x W): 600 x 350mm.
- Weight: 15kg.



Code	Description
RPSC04ZX	Barricaddy Mobile Barrier System

### TITAN EXPANDING BARRIER

Ideal for use indoors and out.

- Light enough to transport with ease but stable enough to withstand windy conditions and uneven roads
- Polypropylene/PVC construction will not rot, chip or rust
- Unique clips allow you to connect multiple barriers
- Compatible with Titan Safety Barriers
- Dimensions (H x W x D): 1000 x 550 x 600mm - expands to over 3m
- Weight: 10.5kg



Code	Description
JPKAZ110-005-300	Expanding Barrier - Black/Yellow
JPKAZ110-005-400	Expanding Barrier - Red/White
JPKAZ110-005-600	Expanding Barrier - Blue/White
JPKAZ110-005-700	Expanding Barrier - Green/White

## REECE SAFETY PRODUCTS LIMITED TERMS & CONDITIONS OF SALE

### BASIS OF SALE

1. All orders are accepted and all contracts are made subject to the following terms and conditions provided that any special conditions in any quotation estimate or contract shall prevail to the extent that they are inconsistent with the following terms and conditions
2. If the Company's terms and conditions (whether special or general) shall be at variance or inconsistent with any printed conditions attached to the Buyer's order the Company's terms and conditions shall prevail and be effective notwithstanding any similar conditions otherwise applying to the Buyer's order
3. A quotation which is stated to be for a fixed price shall be deemed to have been withdrawn in any event unless an order in respect thereof is placed within the period specified in the Quotation
4. The Buyer may cancel an order only with the written agreement of the Company in which case the Buyer will indemnify the Company against all costs, expenses, claims and loss incurred prior to or arising from the cancellation

### PRICE

- (a) The price of the Goods shall be the Company's price which shall be binding on the Company, provided the Buyer shall accept the Company's quotation within 30 days
- (b) All prices are exclusive of VAT which the Buyer will pay at the appropriate rate in addition to the price. The Company may raise an invoice for additional VAT on a supply of Goods at any time if the Company has raised and the Buyer has paid an earlier invoice for a lesser amount of or no VAT
- (c) Except in respect of an estimate/quotation of acceptance of order where the price is expressly stated to be fixed for a specific delivery period, the Company reserves the right to alter its estimate or order prices in respect of the Goods by reference to the price ruling at the date of dispatch of the Goods, by any additional sum as may from time to time be necessary to cover the increases in the costs of materials and/or labour (or any other factors affecting the cost of production or delivery) which may occur between the date of conclusion of the contract and the date of dispatch
- (d) Where in an estimate/quotation or acceptance of order a price is expressly stated to be fixed for a specific delivery period or for any reason (except where the same is due to the default of the Company) a supply is made under the estimate or order after the end of the said period, the Company reserves the right in respect of such supply to charge the price ruling at the date of dispatch of the Goods

### DELIVERY

6. Where an estimate/quotation or acceptance of order specifies a delivery period but the Company is unable to complete delivery without further information or details from the Buyer and there is in the opinion of the Company a delay on the part of the Buyer in providing the information or details, then the Company may if it wishes, give notice extending the delivery period and without prejudice to the Company's rights to vary its prices under Condition 5 hereof
7. Any date or period set out herein for the delivery of the Goods or any part of them shall not be of the essence of the Contract and if the Company is prevented from delivering any goods at the time provided for delivery by reason of any cause outside its reasonable control (including but not so as to limit the generality of the foregoing fire, explosion, delay in supplies, plant breakdown, interference by labour strikes or lockouts or non-availability of transport or materials) then the date or period for delivery shall be extended by the duration of the occurrence

### TERMS OF PAYMENT

8. All Goods supplied shall be paid for within 30 days from the date of invoice of the Company unless specifically agreed otherwise in writing between the Company and the Buyer. If any discount is offered by the Company then the same shall be deductible only if the Goods are paid for within the said period and on no account shall discount be deductible from Value Added Tax
9. Non compliance with the Company's terms of payment shall constitute default without reminder. In the case of default the Company may then charge interest at the rate of 3% per month from the date upon which the payment falls due. In the event that the Buyer shall fail to fulfil the terms of payment in respect of any invoice the Company may in its sole discretion demand payment of all outstanding balances whether due or not and/or may cancel all outstanding orders and/or decline to make further deliveries except upon receipt of cash or security. Except where the laws relating to bankruptcy and liquidation prove otherwise the Buyer shall not be entitled to withhold or set off payment for Goods delivered by virtue of any debt claim or allegation other than a valid

claim made in respect of those Goods under Condition 12(a) or (b)

- i) The Company reserves the right to operate a minimum invoice charge and minimum delivery charge
- ii) The Company reserves the right to operate a percentage deposit charge

### WARRANTIES AND CLAIMS

10.(a) The Buyer should satisfy itself by testing samples or otherwise of the fitness for its purpose of all Goods ordered and will be deemed and conclusively presumed to have done so if Goods delivered differ materially from their description or from samples supplied or are by reason of faulty material, workmanship or packing unshakeable the Company undertakes to replace such goods or (at the option of the Company) to refund the purchase price or a fair proportion thereof. This undertaking by the Company is subject and conditional upon the following provisions:

- i) Claims in respect of faults readily discernible on a reasonable examination of the Goods shall be made as soon as such faults are reasonably capable of discovery but in any event within 2 months of the delivery of the Goods
- ii) Claims in respect of other faults including faults not discernible until the Goods have been taken into use, or otherwise dealt with shall be made as soon as the fault is reasonably discernible but in any case within 2 years of delivery of the Goods to the Buyer
- iii) All claims must be made in writing to the registered office of the Company
- iv) The Buyer must afford to the Company the opportunity to examine any Goods which are the subject of a claim before the Goods have been further used or otherwise dealt with
- v) The Company will not be liable for any damage to or deterioration of the Goods which may occur after delivery whether the same may occur due to unsuitable storage conditions or to abuse or to any other cause whatsoever
- vi) Goods in respect of which any claim is made under this Condition shall be returned to the Company carriage paid for inspection or (if return is not practicable) alternatively the Company will inspect the Goods or procure the same to be inspected in situ. In the event reimburse the Buyer with the cost of any such carriage but if the Buyer's claim shall not be upheld then the Company reserves the right to charge the Buyer for all or part of the labour, travelling, carriage and other dues involved
- vii) Subject to Condition 20 the undertaking of the Company to make a replacement or refund shall be the absolute limit of the Company's liability to the Buyer in respect of any such claim. The undertaking is in substitution for any other claim or warranty (except as to title) implied by statute, common law or otherwise in respect of the Goods
- viii) Where Goods expressly state on the outer packaging of the Goods "Reece Safety Products Ltd" guarantee this product for a period of 1 year from the date of purchase. In the event that the product fails due to faults in the manufacturing process or defects in material content, then we will replace the product free of charge. This guarantee does not, however extend to misuse where the product has either been abused or used for purposes other than for which it was designed. This guarantee does not affect your statutory rights" these terms shall prevail over 11(i) to 11(vii) as necessary
- (b) Whilst the Company warrants that any survey, advice, representation or forecast given on the part of the Company from anything said or written in discussion or negotiations between the Company and the Buyer or its respective agents prior to the making of the contract is given in good faith and after due consideration of the facts before the Company the Company shall be under no legal liability whether in contract negligence or howsoever in respect thereof to the Buyer or any other person except to the extent to which there is a breach of this warranty
- (c) Nothing in these Conditions of Sale shall absolve the Company from liability for death or personal injury resulting from the negligence of the Company or its servants
11. (a) No claim for short delivery of Goods or damage to Goods in transit can be entertained unless either (where this is possible) a receipt is given to the carrier detailing the shortage or damage at the time of delivery or alternatively notification of the shortage or damage is made to the Company within 7 days from the delivery of the Goods by the carrier
- (b) No claim for non-delivery of Goods can be entertained unless the Company is notified within 7 days from the date if its invoice

## BUYER DESIGN

12. Where Goods are ordered in accordance with the design drawings and specifications or samples furnished by the Buyer, the Buyer shall indemnify the Company against all liability or alleged liability in respect of any infringement of patents, registered designs, trademarks, trade names or any other rights of third parties arising out of the manufacture sale or use of such Goods and against all claims demands proceedings or damages costs and expenses arising in respect of such liability or alleged liability

## SELLER DESIGN AND TRADEMARKS

13. Where Goods carry the proprietary designs, trademarks or other specific features of the Company the Buyer will apply all reasonable endeavours to protect the integrity of the proprietary designs, trademarks or other specific features and report any actual or suspected misuse or counterfeit occurrences immediately to the Company should the Buyer become aware of such occurrences

## PASSING OF RISK

14. The risk in the Goods shall pass to the Buyer when the Company delivers the Goods in accordance with the terms hereof to the Buyer or other person to whom the Company has been authorised by the Buyer to deliver the Goods whether expressly or by implication and the Company shall not be liable for the safety of the Goods thereafter and accordingly the Buyer should insure the Goods thereafter against such risks as may be commercially prudent

## CARRIAGE

15. All prices stated or referred to in the Company's estimates/quotations or in the Company's acceptance of orders do not include any reasonable carriage or packing charges which shall be paid for by the Buyer at the discretion of the Company

## RESERVATION OF PROPERTY AND RIGHT OF DISPOSAL

16. (a) Until payment by the Buyer is made in full of the price and any other monies due to the Company in respect of the Goods:

- i) The Goods shall remain the sole and absolute property of the Company as legal and equitable owner
  - ii) The Buyer shall hold the Goods solely and as a fiduciary for the Company and shall store the Goods separately from his own Goods or those of any other person and in a manner which makes them readily identifiable as the Goods of the Company and shall hold the proceeds of sale of the Goods in trust for the Company and shall keep them at all times identifiable as the Company's monies and shall not mingle them with other monies or pay them into an overdrawn bank account
  - iii) The Buyer shall insure the Goods against all normal commercial risk to their full replacement value with an insurance company of repute
- (b) The Buyer shall be deemed not to have paid the Company for Goods in the possession of the Company at any time unless the Buyer can prove that payment has been received by the Company

(c) At any time prior to the payment in full of the price and other monies payable to the Company in respect of the Goods the Company or its agents may enter the premises of the buyer and take possession of any Goods of which the Company is the owner and remove and dispose of them as the Company thinks fit

## BREACH

17. If the Buyer:

- (a) Makes default in or commits any breach of any of its obligations (including as to payment of price) to the Company hereunder or
  - (b) Is involved in any legal proceedings in which its solvency is in question or
  - (c) Is a company and any meeting is convened or resolution passed or petition is presented (otherwise than for reconstruction or amalgamation) to wind it up or a receiver is appointed
- Or
- (d) Ceases or threatens to cease to trade

Then in any such case the Company shall immediately become entitled (without prejudice to its other claims and rights under the contract) to suspend further performance of the contract for such time not exceeding 6 months as it shall in its absolute discretion think fit or (whether or not notice of such suspicion shall have been given) to treat the contract as wrongfully repudiated by the Buyer and forthwith terminate the contract and claim all outstanding monies due to the Company from the Buyer

## LIMITATIONS OF LIABILITY

18. These Conditions state that:

(a) Subject to the provisions of paragraph (b) of this condition it is expressly stipulated that in the event of any claim or any grounds being made by the Buyer against the Company in respect of the Goods or any matter arising from or in relation to the contract relating thereto the liability of the Company shall be limited (in respect of each claim or series of connected claims) to the invoice value of the Goods and under no circumstances shall the Company be under any further liability to the Buyer whether for loss of profit or for any direct or consequential loss howsoever arising

(b) Notwithstanding any provisions herein contained, nothing in these Conditions shall operate or be construed to exclude or restrict any liability of the Company for death or personal injury resulting from the negligence of the Company

## GOVERNING LAW

19. All contracts shall be governed by English Law in the event of any dispute whether of interpretation or otherwise or as to the liability either of the Company or the Buyer arising out of the sale use or operation or failure to operate of the Goods or any part thereof the same shall be determined by the English courts or law to whom jurisdiction of the Company and the Buyer hereby submit

## FORCE MAJEURE

20. In addition to the right to extend the delivery period referred to in Condition 7, the Company shall be entitled to suspend or postpone performance of the Agreement in the event of strike, lock-out, dispute, breakdown, accident, force majeure or any other circumstances beyond the reasonable control of the Company in the event of such suspension or postponement beyond the period of 3 months the Agreement shall, with the consent of the Buyer and the Company, (such consent not to be unreasonably withheld by either of them so far as it remains unperformed) be deemed to be terminated without prejudice to the right of either party arising before the date of termination

## PREVIOUS CONDITIONS

21. The Conditions supersede all previous Conditions of Sale of the Company

## CONSTRUCTION

22. If at any time one or more of the above conditions becomes in whole or in part invalid, illegal or unlawful in any respect under any law the validity legality and enforceability of the remaining provisions thereof and the other Conditions herein shall not in any way be affected or impaired thereby

## RETURNS

23. The return of goods must be agreed in advance with RSP Ltd and sent to the Lowfields Business Park, Elland, address. With the exception of goods being returned due to fault or damage, the cost of return carriage shall be met by the buyer, not by RSP Ltd. RSP Ltd will charge 15% of the invoiced amount as a handling fee for returned goods. The return of goods must be made within 14 days (2 weeks) of receipt. Customised items are non-returnable, except because of fault or damage.



**REECE SAFETY PRODUCTS LTD**

Unit B9, Lowfields Close, Lowfields Business Park, Elland, West Yorkshire HX5 9DX

T +44 (0)1422 310456 F +44 (0)1422 311070

email [confinedspace@reecesafety.co.uk](mailto:confinedspace@reecesafety.co.uk) [www.reecesafety.co.uk](http://www.reecesafety.co.uk)

**+44(0)1422 310456**

[confinedspace@reecesafety.co.uk](mailto:confinedspace@reecesafety.co.uk)

[www.reecesafety.co.uk](http://www.reecesafety.co.uk)